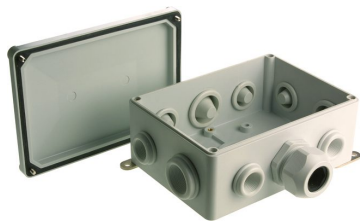




Product data sheet

3191/35 - Junction box 120x120x68 mm, DIN35



Thermoset, gray, empty, with mounting rail EN 60715 TH 35 without terminals

| Characteristics                         |                                 |
|---|---------------------------------|
| Eldas number                            | 152160057                       |
| Base Unit                               | Piece                           |
| availability                            | Delivery according to agreement |
| EAN Code                                | 7611718205316                   |
| group                                   | 167000                          |
| Packaging unit                          | 6                               |
| country of origin                       | CH                              |
| Customs tariff number                   | 392590                          |
| Weight (g)                              | 637 g                           |
| Technical data                          |                                 |
| Hole spacing (mm)                       | 46 mm                           |
| Dimensions length x width x height (mm) | 120x120x68 mm                   |



## Product data sheet

3191/35 - Junction box 120x120x68 mm, DIN35

### Product accessories



**3078 - Insertion nozzle, 29 mm, 9-24 mm**

PG21, made of thermoplastic, gray.



**3069 - Insertion nozzle, 23 mm, 5-18 mm**

PG16 made of thermoplastic, gray.



## Product data sheet

3191/35 - Junction box 120x120x68 mm, DIN35

### Product systems

---



**Thermoset junction box 120x120x68 mm up to 5x10 mm<sup>2</sup> for cable glands or entry glands**



- 5x10 mm<sup>2</sup>
  - IP54 International Protection DIN 40050
  - with two swiveling mounting lugs
  - for two-screw branch terminals series 30840..., 5x10 mm<sup>2</sup>
-