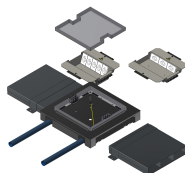




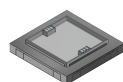
System overview

Floor junction box BAK22 300x40



Underfloor system with square plenum box and chrome steel and aluminum junction boxes, edge height 22mm for UFK 300x40 underfloor duct.

Components



51562 - Plenum box BAK22 384x384/40 AI KM

with frame and lid made of aluminum
edge height 22mm
with 2 cable trays
bottom height 74-102mm



51694 - Collar 40 BAK / ZUG

made of sendzimir galvanized sheet steel
Color: Raw
incl. extension bolt 40/M6x6
Collar height: 40mm



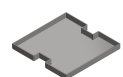
51697 - Collar 70 BAK / ZUG

made of sendzimir galvanized sheet steel
Color: Raw
incl. extension bolt 40/M6x6
Collar height: 70mm



51695 - Collar 50 BAK / ZUG

made of sendzimir galvanized sheet steel
Color: Raw
incl. extension bolt 40/M6x6
Collar height: 50mm



51525 - Cover of stainless steel w border BAK KM

made of chrome steel 3mm
with edge height 22mm
for cable tray





System overview

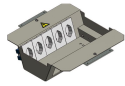
Floor junction box BAK22 300x40

	<p>51522 - Connecting box BAK 384x384/40 Cr KM</p> <p>with frame and lid made of chrome steel edge height 22mm with 2 cable trays bottom height 74-102mm</p>	
	<p>51524 - Cover of stainless steel with border ZUG</p> <p>made of chrome steel with edge height 22mm</p>	
	<p>51516 - Pulling box ZUG 384x384/40 Cr</p> <p>with chrome steel frame and lid edge height 22mm bottom height 74-102mm</p>	
	<p>51556 - Pull box ZUG22 384x384/40 Al</p> <p>with aluminum frame and lid edge height 22mm bottom height 74-102mm</p>	
	<p>52040 - Installation kit 2x5FLF vertical empty BAK22</p> <p>hook-in, to BAK with protective edge 12mm and 22mm made of galvanized sheet steel 1.5mm including 2 mounting plates color: RAL 7032 pebble gray equipped with: 1 pc. Terminal strip 9x2.5mm² minimum floor height: BAK12=89mm; BAK22=99mm</p>	
	<p>52073 - Installation kit 2x8 module-LM empty BAK22 / DAK22</p> <p>for modules type Legrand Mosaic hangable, to BAK with protective edge 12mm and 22mm including 2 mounting plates color: RAL 7032 pebble gray equipped with: 1 pc. Terminal strip 9x2.5mm² minimum floor height: BAK12=89mm; BAK22=99mm</p>	
	<p>52058 - Installation kit 2x8 module-BT empty BAK22 / DAK22</p> <p>for modules type bticino mountable, to BAK and DAK with protective edge 22mm including 2 holding plates and 2 mounting plates color: RAL 7032 pebble gray equipped with: 1 pc. Terminal strip 9x2.5mm² minimum floor height: BAK12=89mm; BAK22=99mm</p>	



System overview

Floor junction box BAK22 300x40



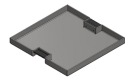
52050 - Installation kit 2x5FLF vertical SB BAK22

hook-in, to BAK with protective edge 12mm and 22mm
including 2 mounting plates
Color: RAL 7032 pebble gray
equipped, wired and tested: 1 pcs. Terminal strip 9x2.5mm²
5 pcs. socket FLF 3/5 T13 white 55200
Minimum floor height: BAK12=89mm; BAK22=99mm



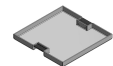
52030 - Installation kit 2x3FLF horizontal SB BAK22

hook-in, to BAK with protective edge 12mm and 22mm
made of galvanized sheet steel 1.5mm
including 2 mounting plates
color: RAL 7032 pebble gray
equipped, wired and tested: 1 pc. Terminal block 7x2.5mm²
3 pcs. socket FLF 3/5 T13 white 55200
minimum floor height: BAK12=74mm; BAK22=84mm



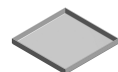
51530 - Cr lid with rim BAK/DAK22 BL

made of chrome steel 3mm
with edge height 22mm
including 2 pcs. Brush outlets



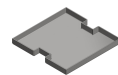
51573 - Al lid with rim BAK/DAK22 BL

made of aluminum 3mm
with edge height 22mm
including 2 pcs. Brush outlets



51564 - Al lid with rim 271 ZUG22

made of aluminum 3mm
with edge height 22mm



51565 - Al lid with rim BAK/DAK22 KM

made of aluminum 3mm
with edge height 22mm
for cable tray



52060 - Installation kit 2x3FLF horizontal empty BAK22

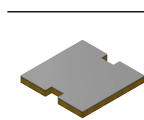

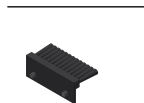

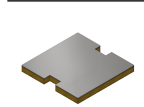

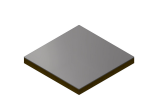




hook-in, to BAK with protective edge 12mm and 22mm
made of galvanized sheet steel 1.5mm
including 2 mounting plates
color: RAL 7032 pebble gray
equipped with: 1 pc. Terminal strip 7x2.5mm²
minimum floor height: BAK12=74mm; BAK22=84mm





System overview

Floor junction box BAK22 300x40

	<p>51567 - Al cover visible BAK22 KM</p> <p>made of aluminum 3mm, Sichseite colorless anodized, glued to wood raw chipboard V100 22mm. Dimension: 271x271x25mm</p>	
	<p>51111 - Brush strip BAK22 / DAK22 / WAK 214</p> <p>plastic black Dimension: 53x26mm Bristle length: 20mm</p>	
	<p>51566 - Cr lid visible BAK/DAK 22 KM</p> <p>made of chrome steel V2A 3mm , visible side ground grain 220, glued to wood raw chipboard V100 22mm. Dimension: 271x271x25mm</p>	
	<p>51555 - Cr cover visible 271 ZUG22</p> <p>made of chrome steel V2A 3mm , visible side ground grain 220, glued to wood raw chipboard V100 22mm</p>	
	<p>51693 - Collar 30 BAK / ZUG</p> <p>made of sendzimir galvanized sheet steel Color: Raw incl. extension bolt 30/M6x6 Collar height: 30mm</p>	
	<p>51696 - Collar 60 BAK / ZUG</p> <p>made of sendzimir galvanized sheet steel Color: Raw incl. extension bolt 40/M6x6 Collar height: 60mm</p>	