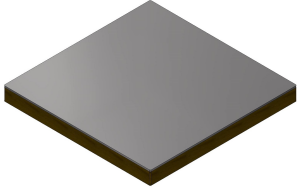




Product data sheet

51555 - Cr cover visible 271 ZUG22



made of chrome steel V2A 3mm , visible side ground grain 220,
glued to wood raw chipboard V100 22mm

Characteristics

Base Unit

Piece

availability

Delivery according to agreement

Weight (g)

2900 g



Product data sheet

51555 - Cr cover visible 271 ZUG22

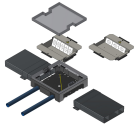
Product accessories



Product data sheet

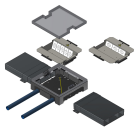
51555 - Cr cover visible 271 ZUG22

Product systems



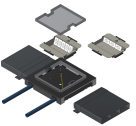
Floor junction box BAK22 200x40

Underfloor system with square plenum box and chrome steel and aluminum junction boxes, edge height 22mm for UFK 200x40 underfloor duct.



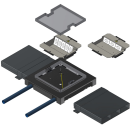
Floor junction box BAK22 200x50

Underfloor system with square plenum box and chrome steel and aluminum junction boxes, edge height 22mm for UFK 200x50 underfloor duct.



Floor junction box BAK22 300x40

Underfloor system with square plenum box and chrome steel and aluminum junction boxes, edge height 22mm for UFK 300x40 underfloor duct.



Floor junction box BAK22 300x50

Underfloor system with square plenum box and chrome steel and aluminum junction boxes, edge height 22mm for UFK 300x50 underfloor duct.

