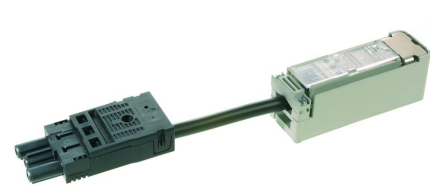




Product data sheet

49696F - Branching box FC 3G2.5 / 4mm² 3P C1



Junction box pre-assembled article 49695 with 10 cm round cable 3x1.5mm 2 and socket code 1

Characteristics	
Base Unit	Piece
availability	Delivery in 3 weeks
EAN Code	7611718240720
group	170000
Packing	30
country of origin	CH
Customs tariff number	8544.4229
Weight (g)	105,5 g
Color	gray
Coding plug connection	Code 1
Technical data	
Box Type	Junction boxes
Dimensions length x width x height (mm)	260x30x34 mm
Dimensions length x width x height (inch)	7,87x1,18x1,34 inch
Degree of protection	IP20



Product data sheet

49696F - Branching box FC 3G2.5 / 4mm² 3P C1

Metal parts	Korrosionsgeschützt
Flat cable contacting type	Piercing-Kontaktierung (Messer)
Number of poles	3 pole
Contacting type	Screw terminal
Connecting capacity (mm)	3 mm
Rated current heavy current part (A)	16 A
Rated voltage heavy current part (V)	250 V
Operating Temperature (°C)	-15 bis 85 °C
Installation temperature min. (°C)	5 °C
Material slider/bottom part	Polyamid, grau
Material housing	Polyamid, grau
Material hood	Polycarbonat, transparent
Number Screwdriver Clamping screws Heavy current part	1
Tightening torque for clamping screw (Nm)	0,7 Nm



Product data sheet

49696F - Branching box FC 3G2.5 / 4mm² 3P C1

Product accessories



Stecker_01_03 - Connexions enfichable Code 1 pour tension de réseau, 3 pôles
null



Product data sheet

49696F - Branching box FC 3G2.5 / 4mm² 3P C1

Product systems



Flat cable system 3G2.5 mm² and 3G4 mm²

This system is characterized by its low installation cost and easy expandability. In addition to fixed installations in workshops, commercial premises and laboratories with machines and equipment of low power, where the flat cable is laid in wall, floor or ceiling ducts, it is also particularly suitable due to its extraordinary flexibility for installations where the connection locations of the consumers change frequently, such as sales rooms, shop windows, restaurants and offices with frequent changes of furniture. It is also particularly popular for installations in prefabricated houses and is often used to power luminaires and lamps in suspended ceilings.

