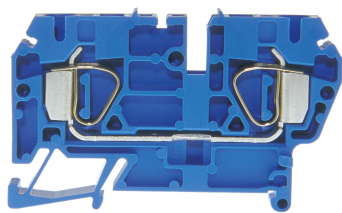




Product data sheet

35310/4BL - Tension clamp terminal DIN35 4mm² 65.5x6x35mm blue



Tension clamp terminal DIN35 4mm² 65.5x6x35mm blue with 2 connections marking possibility on the side and in the middle with stripes, recessed for cross connection

Characteristics	
Eldas number	158430257
Base Unit	Piece
availability	available from stock
EAN Code	7611718217692
group	165000
Packaging unit	50
country of origin	CH
Customs tariff number	8536.9080
Weight (g)	10 g
Color	blue
Technical data	
Dimensions length x width x height (mm)	65.5x6x35 mm
Dimensions length x width x height (inch)	2.58x0.24x1.38 inch
Cross section (mm²)	0,5 - 4 mm²
Nominal current (A)	30 A



Product data sheet

35310/4BL - Tension clamp terminal DIN35 4mm² 65.5x6x35mm blue

Rated voltage (V)	600 V
Connection type	Spring clamp
DIN rail type	DIN-35
Number of connection point	2
Number of floor	1
Number of potentials	1
Insulating material	PA66
Nominal Cross-section (mm²)	4 mm²
Stripping length mm (mm)	12 mm

Rating data according to UL 1059

Rated voltage US (V)	300 V
Nominal cross section (AWG)	12 AWG
Cross-section (AWG)	12 - 20 AWG
Stripping length (inch)	0,47 inch



## Product data sheet

35310/4BL - Tension clamp terminal DIN35 4mm<sup>2</sup> 65.5x6x35mm blue

### Product accessories



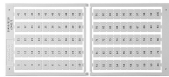
**80247 - Test plug Ø 2.3mm red, socket 4mm**

connecting cable incl.



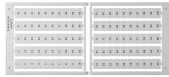
**80248 - Test plug Ø 2.3mm black, socket 4mm**

connecting cable incl.



**Bezeichnungskarte\_6x12mm - Designation cards 6x12mm**

Various designation labels 6x12mm with different embossing.



**Bezeichnungskarte\_6x9mm - Designation card 6x9mm**

Various designation plates with different embossing.



**35455/09BS - Marking strip 9x240mm**

with 25strips per box



**35455/69T - Marking adaptor for label 6x9mm**

to spring clamp terminals



**35311/4 - Partition and end barrier 64.5x39mm**

grey, to spring clamp terminals with 2 clamps



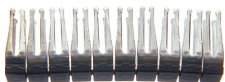
**35445 - End retainer for Spring clamp terminal DIN35**

of polyamide 66, grey dimensions: 8x45.2x23.5mm to spring clamp terminals 1.5 to 16mm 2



**35425/06 - Cross-junction rack 10pole black**

Cross-connection rake insulated, black, to tension spring terminals 6mm



**35425/06BR - Bridge to cross-junction rack black**

Bridge insulated, suitable for 3542506 and 3542508 to connect 2 connecting rakes.  
33.2x6x10.4 mm



**35435/415 - Cable entrance to 1.5mm<sup>2</sup> conductors**

funnel-shaped, to spring clamp terminals 4mm 2Stripes of 10 pieces, separable



**35435/310 - Cable entrance to 1mm<sup>2</sup> conductors**

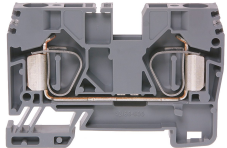
funnel-shaped, to spring clamp terminals 1.5 and 2.5mm 2Stripes of 10 pieces, separable



## Product data sheet

35310/4BL - Tension clamp terminal DIN35 4mm<sup>2</sup> 65.5x6x35mm blue

### Product systems



#### Tension clamp terminals with two connections DIN 35

Various tension spring terminals with two connections.

