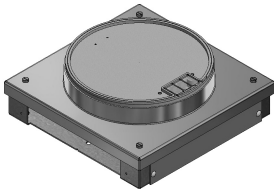




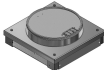



System overview

Floor junction box BAK5 Ø220 200x50



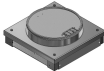


Underfloor system with round plenum box aluminum, edge height 5mm for underfloor duct UFK 200x50.

Components

	<p><b>51652 - Junction box Ø220 BAK5 284x284/50 with cable trough</b></p> <p>Junction box Ø220 BAK5 284x284/50 with frame and cover made of die-cast aluminum with protective edge, edge height 5mm with 1 cable trough 53961 for floor height 112-132mm</p>	
	<p><b>52976 - Mounting tray 6FLF vertical empty DAK/BAK</b></p> <p>to DAK 8841 Ø220mm made of PVC gray, can be hooked from above with 2 terminal strips 5x2,5m², max. installation depth for sockets: 32mm</p>	

Underfloor system with round plenum box aluminum, edge height 5mm for underfloor duct UFK 200x50.

Components

	<p><b>51652 - Junction box Ø220 BAK5 284x284/50 with cable trough</b></p> <p>Junction box Ø220 BAK5 284x284/50 with frame and cover made of die-cast aluminum with protective edge, edge height 5mm with 1 cable trough 53961 for floor height 112-132mm</p>	
	<p><b>52976 - Mounting tray 6FLF vertical empty DAK/BAK</b></p> <p>to DAK 8841 Ø220mm made of PVC gray, can be hooked from above with 2 terminal strips 5x2,5m², max. installation depth for sockets: 32mm</p>	