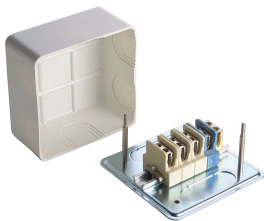








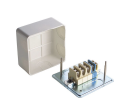



System overview

Junction boxes with base plate made of sheet metal and cover made of thermosetting plastic for



- 5x10 mm²

Components

	<p>2080C - Junction box, 115x115 mm, rail 4050A</p> <p>Base plate made of sheet metal and cover made of thermoset, white, with rail, without clamps</p>	
	<p>2081C - Junction box, 160x160 mm, rail 4050A</p> <p>Base plate made of sheet metal and cover made of thermoset, white, with rail, without clamps</p>	
	<p>2115C - Junction box, 115x115 mm, 5x10 mm²</p> <p>Base plate made of sheet metal and cover made of thermosetting plastic, white, with terminals 3P N PE</p>	
	<p>2125C - Junction box, 160x160 mm, 5x16 mm²</p> <p>Base plate made of sheet metal and cover made of thermosetting plastic, white, with terminals 3P N PE</p>	
	<p>2145C - Junction box, 160x160 mm, 5x35 mm²</p> <p>Base plate made of sheet metal and cover made of thermosetting plastic, white, with terminals 3P N PE</p>	