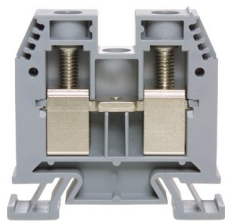




Product data sheet

3452/35GR - Terminal block DIN35 35mm² gray



Terminal blocks with best possible contacting, stainless steel screws, 4-digit marking option on both sides, recessed for cross-connections

Characteristics	
Eldas number	158110637
Base Unit	Piece
availability	available from stock
EAN Code	7611718238703
group	165000
Packaging unit	10
country of origin	CH
Customs tariff number	8536.9080
Weight (g)	54,25 g
Color	gray
Technical data	
Dimensions length x width x height (mm)	60.5x14x56 mm
Dimensions length x width x height (inch)	2.38x0.55x2.21 inch
Cross section (mm²)	1,5 - 35 mm²
Nominal current (A)	125 A



## Product data sheet

### 3452/35GR - Terminal block DIN35 35mm<sup>2</sup> gray

Rated voltage (V)	1000 V
Connection type	Screw terminal
DIN rail type	DIN-35
Smallest connectable section (mm <sup>2</sup> )	1,5 mm <sup>2</sup>
Number of connection point	2
Number of floor	1
Number of potentials	1
Clamping screw M	M6 (M = 2.5Nm)
Central thread M	M4 (M = 1.5Nm)
Insulating material	PA66
Nominal Cross-section (mm <sup>2</sup> )	35 mm <sup>2</sup>
Stripping length mm (mm)	20 mm
conductors of the same cross-section per clamping point EN60947 (mm <sup>2</sup> )	1x35 , 1x25 , 2x16 mm <sup>2</sup>
Head reception room width x height (mm)	9.5x10.6 mm
<b>Rating data according to UL 1059</b>	
Rated voltage US (V)	600 V
Nominal cross section (AWG)	2 AWG
Cross-section (AWG)	2 - 16 AWG
Smallest connectable section (AWG)	16 AWG
Stripping length (inch)	0,79 inch
Tightening torque (lb-inch)	22,1 lb-inch



## Product data sheet

3452/35GR - Terminal block DIN35 35mm<sup>2</sup> gray

### Product accessories



**80071R - Test plug Ø M4 red, socket 4mm**

plug and adaptor in one piece



**80071S - Test plug Ø M4 black, socket 4mm**

plug and adaptor in one piece



**80070S - Test plug Ø M3 black, socket 4mm**

plug and adaptor in one piece



**2737S - Test plug Ø 2.8mm black, socket 4mm**

connecting cable incl.



**3957 - Marking strip 6x3mm unprinted white**

Sales content with 100 tags per box

**30785 - Partition end wall 68.5x60.8x4.5**

null



**30199 - Stopper DIN35 height 50mm**

Aluminum alloy locking piece



**81415L - Link to cross-connections**

to terminals 35mm 2



**80049/35 - Warning plate for single terminal 35mm<sup>2</sup>**

to series 3428



**3869/4 - Cover for 4 terminals yellow**

with black printing, to series 3428



**81441 - Sealing eyelet Ø 4.2mm**

Sealing eyes



**81541 - Cross connection bolt single M4 insulated (12.2 mm)**

Cross connection bolt complete with spacer sleeve. 12.2 mm



## Product data sheet

3452/35GR - Terminal block DIN35 35mm<sup>2</sup> gray



### Bezeichnungskarte\_6x12mm - Designation cards 6x12mm

Various designation labels 6x12mm with different embossing.



### Bezeichnungskarte\_6x9mm - Designation card 6x9mm

Various designation plates with different embossing.



### Bezeichnungskarte\_6x3mm - Designation card 6x3mm

Various designation plates with different embossing.



### 3869/5 - Cover for 5 terminals yellow

with black printing, to series 3428



### 3869/6 - Cover for 6 terminals yellow

with black printing, to series 3428



### 3869/7 - Cover for 7 terminals yellow

with black printing, to series 3428



### 3869/8 - Cover for 8 terminals yellow

with black printing, to series 3428



## Product data sheet

3452/35GR - Terminal block DIN35 35mm<sup>2</sup> gray

### Product systems

---



#### Terminal blocks DIN35 2.5mm<sup>2</sup>-70mm<sup>2</sup>

DIN35 terminal blocks 2.5mm<sup>2</sup>-70mm<sup>2</sup> with best possible contacting, stainless steel screws, 4-digit marking option on both sides, recessed for cross-connections

