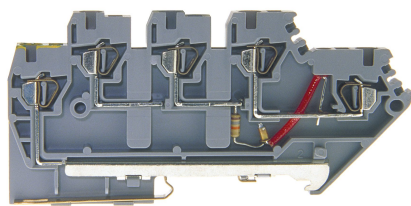




Product data sheet

35370/2VN - PE initiator spring-cage terminal 2VN 1.5mm<sup>2</sup> 96x5x40mm LED



PE initiator spring-cage terminal 2VN 1.5mm<sup>2</sup> 96x5x40mm LED standard with PE connection

Characteristics	
Eldas number	158451937
Base Unit	Piece
availability	Delivery according to agreement
EAN Code	7611718247491
group	165000
Packaging unit	25
country of origin	CH
Customs tariff number	8536.9080
Weight (g)	16,87 g
Color	gray
Technical data	
Dimensions length x width x height (mm)	96x5x40 mm
Dimensions length x width x height (inch)	3.78x0.20x1.58 inch
Cross section (mm <sup>2</sup> )	0,2 - 1,5 mm <sup>2</sup>
Nominal current (A)	10 A



Product data sheet

35370/2VN - PE initiator spring-cage terminal 2VN 1.5mm<sup>2</sup> 96x5x40mm LED

Rated voltage (V)	60 V
Connection type	Spring clamp
DIN rail type	DIN-35
Number of connection point	5
Number of floor	1
Number of potentials	4
Insulating material	PA66
Nominal Cross-section (mm <sup>2</sup> )	1,5 mm <sup>2</sup>
Stripping length mm (mm)	8 mm

Rating data according to UL 1059

Rated voltage US (V)	50 V
Nominal cross section (AWG)	16 AWG
Cross-section (AWG)	14 - 26 AWG
Stripping length (inch)	0,32 inch



## Product data sheet

35370/2VN - PE initiator spring-cage terminal 2VN 1.5mm<sup>2</sup> 96x5x40mm LED

### Product accessories



**80247 - Test plug Ø 2.3mm red, socket 4mm**

connecting cable incl.



**80248 - Test plug Ø 2.3mm black, socket 4mm**

connecting cable incl.



**Bezeichnungskarte\_5x9mm - Designation card 5x9mm**

Various designation plates with different embossing.



**35455/09BS - Marking strip 9x240mm**

with 25strips per box



**35455/59T - Marking adaptor for label 5x9mm**

null



**35371/2 - Partition and end barrier 96x45mm**

grey, to spring clamp terminals for proximity switches



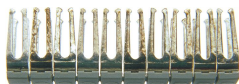
**35445 - End retainer for Spring clamp terminal DIN35**

of polyamide 66, grey dimensions: 8x45.2x23.5mm to spring clamp terminals 1.5 to 16mm 2



**35425/05 - Center jumper cover grey**

Cross-connection rake insulated, gray, to tension spring terminals 5mm



**35425/05BR - Bridge to cross-junction rack grey**

Bridge insulated, suitable for 3542505 to connect 2 connecting rakes. 33.2x6x10.4 mm



**35435/302 - Cable entrance to 0.2mm<sup>2</sup> conductors**

funnel-shaped, to spring clamp terminals 1.5 and 2.5mm 2Stripes of 10 pieces, separable



**35435/305 - Cable entrance to 0.5mm<sup>2</sup> conductors**

funnel-shaped, to spring clamp terminals 1.5 and 2.5mm 2Stripes of 10 pieces, separable



**35435/310 - Cable entrance to 1mm<sup>2</sup> conductors**

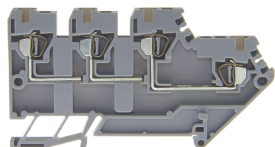
funnel-shaped, to spring clamp terminals 1.5 and 2.5mm 2Stripes of 10 pieces, separable



## Product data sheet

35370/2VN - PE initiator spring-cage terminal 2VN 1.5mm<sup>2</sup> 96x5x40mm LED

## Product systems



### Initiator spring-cage terminal blocks DIN35

Various DIN35 initiator spring-cage terminals.

