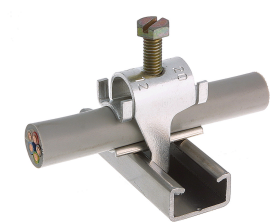




Product data sheet

43636 - Quick shifter C20 32-40mm



made of aluminum alloy, hardened without cable support

Characteristics	
Eldas number	120114707
Base Unit	Piece
availability	available from stock
Packaging unit	100
Customs tariff number	761699
Technical data	
Dimensions length x width x height (mm)	48x56 mm
Clampable diameter (mm)	32-40 mm



Product data sheet

43636 - Quick shifter C20 32-40mm

Product accessories



43655 - Cable support C20 32-40

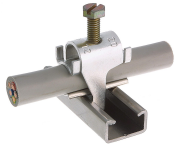
made of aluminum alloy, hardened



Product data sheet

43636 - Quick shifter C20 32-40mm

Product systems



Quick installer aluminum alloy profile rail type C20



- Quick laying aluminum alloy for profile rail type C20.
 - With hexagon slotted screw.
 - For the laying of cables are always cable pads required
-