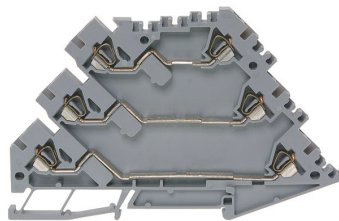




Product data sheet

35400/2GR - Three-pin tension clamp DIN35 1.5mm² gray



Three-stud terminal block with 3x2 connections, marking option: lateral and in the middle with stripes, recessed for cross-connection

Characteristics	
Eldas number	158421137
Base Unit	Piece
availability	available from stock
EAN Code	7611718221682
group	165000
Packaging unit	25
country of origin	CH
Customs tariff number	8536.9080
Weight (g)	18 g
Color	gray
Technical data	
Dimensions length x width x height (mm)	110x5x66 mm
Dimensions length x width x height (inch)	4.33x0.20x2.60 inch
Cross section (mm ²)	0,2 - 1,5 mm ²
Nominal current (A)	15 A



Product data sheet

35400/2GR - Three-pin tension clamp DIN35 1.5mm² gray

Rated voltage (V)	800 V
Connection type	Spring clamp
DIN rail type	DIN-35
Smallest connectable section (mm ²)	0,5 mm ²
Number of connection point	6
Number of floor	3
Number of potentials	3
Clamping screw M	M2.5
Central thread M	2.5
Insulating material	PA66
Nominal Cross-section (mm ²)	1,5 mm ²
Stripping length mm (mm)	8 mm
Rating data according to UL 1059	
Rated voltage US (V)	300 V
Nominal cross section (AWG)	16 AWG
Cross-section (AWG)	14 - 26 AWG
Smallest connectable section (AWG)	18 AWG
Stripping length (inch)	0,32 inch
Tightening torque (lb-inch)	4,4 lb-inch



Product data sheet

35400/2GR - Three-pin tension clamp DIN35 1.5mm² gray

Product accessories



Bezeichnungskarte_5x9mm - Designation card 5x9mm

Various designation plates with different embossing.



35455/09BS - Marking strip 9x240mm

with 25strips per box



35455/59T - Marking adaptor for label 5x9mm

null



35401/2 - Partition and end barrier 109x72mm

grey, to 3-step spring clamp terminals



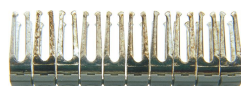
35445 - End retainer for Spring clamp terminal DIN35

of polyamide 66, grey dimensions: 8x45.2x23.5mm to spring clamp terminals 1.5 to 16mm 2



35425/05 - Center jumper cover grey

Cross-connection rake insulated, gray, to tension spring terminals 5mm



35425/05BR - Bridge to cross-junction rack grey

Bridge insulated, suitable for 3542505 to connect 2 connecting rakes. 33.2x6x10.4 mm



35435/302 - Cable entrance to 0.2mm² conductors

funnel-shaped, to spring clamp terminals 1.5 and 2.5mm 2Stripes of 10 pieces, separable



35435/305 - Cable entrance to 0.5mm² conductors

funnel-shaped, to spring clamp terminals 1.5 and 2.5mm 2Stripes of 10 pieces, separable



35435/310 - Cable entrance to 1mm² conductors

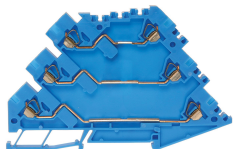
funnel-shaped, to spring clamp terminals 1.5 and 2.5mm 2Stripes of 10 pieces, separable



Product data sheet

35400/2GR - Three-pin tension clamp DIN35 1.5mm² gray

Product systems



Three-stud tension spring terminals DIN 35

Various three-stud tension spring clamps.

