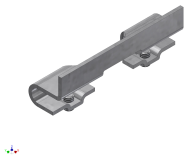




Product data sheet

53510 - Connecting link BRK straight connection



for BRK 4670, 4671, 4183 and STK 4672

Characteristics	
Base Unit	Piece
availability	Delivery according to agreement
group	284000
Packaging unit	300
country of origin	CH
Weight (g)	45 g



## **Product data sheet**

53510 - Connecting link BRK straight connection

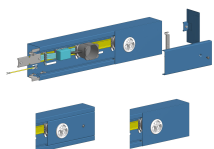
### **Product accessories**



## Product data sheet

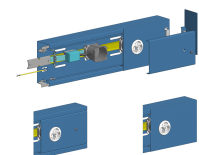
53510 - Connecting link BRK straight connection

### Product systems



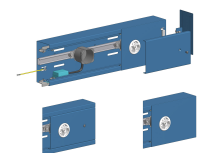
#### Parapet trunking system BRK 4671 140x79

Parapet trunking 4671 140x79mm - With DIN 35 rail - Made of galvanized sheet steel. Openings at the front



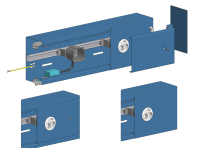
#### Parapet trunking system BRK 4671 182x79

Parapet trunking 4671 182x79 mm - With DIN 35 rail - Made of galvanized sheet steel. Openings at the front



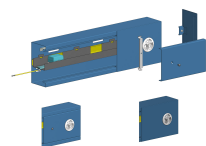
#### Parapet trunking system BRK 4670 182x85

Parapet channel 4670 182x85 mm - With stable anchor rail C30 for fastening with slot nut. - Made of galvanized sheet steel. Openings at the front.



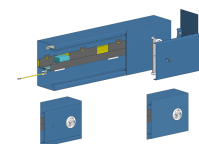
#### Parapet trunking system BRK 4670 200x115

Parapet channel 4670 200x115 mm. With stable anchor rail C30 for fastening with slot nut. - Made of galvanized sheet steel. Openings at the front.



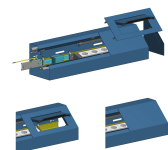
#### Parapet trunking system BRK 4183 182x97

Parapet trunking 4183 182x97 mm with DIN 35 rail - Made of galvanized sheet steel. Openings at the bottom.



#### Parapet trunking system BRK 4183 200x115

Parapet trunking 4183 200x115 mm with DIN 35 rail - Made of galvanized sheet steel. Openings at the bottom.



#### Plinth trunking system SOK 4181 160x160

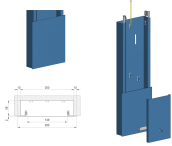
Socket channel SOK 4181 160x160 mm. Sockets accessible via brush outlet.





## Product data sheet

53510 - Connecting link BRK straight connection



### Riser channel system 4672 200x58

Riser channel 4672 200x58mm.

