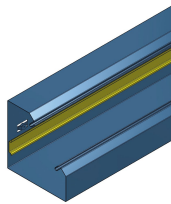




Product data sheet

59504 - 0



made of galvanized sheet steel 1mm with DIN-35 rail
including connecting material and Erlitze
Color: RAL 9010 pure white
Length: 2000mm

Characteristics	
Base Unit	Piece
availability	Delivery according to agreement
group	284000
Packaging unit	1
country of origin	CH
Customs tariff number	7308.9000
Technical data	
Nominal mass	160x160



Product data sheet

59504 - 0

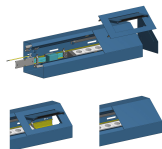
Product accessories



Product data sheet

59504 - 0

Product systems



Plinth trunking system SOK 4181 160x160

Socket channel SOK 4181 160x160 mm. Sockets accessible via brush outlet.

