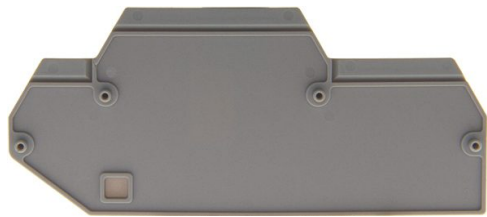




Product data sheet

35321/3 - Partition and end barrier 107x47mm



grey, to 2-step spring clamp terminals

Characteristics	
Eldas number	158437137
Base Unit	Piece
availability	available from stock
EAN Code	7611718218613
group	165000
Packaging unit	25
country of origin	CH
Customs tariff number	392590
Weight (g)	6 g
Color	gray
Technical data	
Dimensions length x width x height (mm)	107.35x4.5x47.2 mm
Dimensions length x width x height (inch)	4.23x0.18x1.86 inch
Connection type	Accessories clamp
Number of connection point	2



Product data sheet

35321/3 - Partition and end barrier 107x47mm

Number of floor	1
Number of potentials	1
Clamping screw M	M4
Nominal Cross-section (mm²)	10 mm²
Rating data according to UL 1059	
Nominal cross section (AWG)	8 AWG
Smallest connectable section (AWG)	24 AWG
Tightening torque (lb-inch)	13,3 lb-inch



## **Product data sheet**

35321/3 - Partition and end barrier 107x47mm

### **Product accessories**



Product data sheet

35321/3 - Partition and end barrier 107x47mm

Product systems



End and partition walls

Various termination and partition walls for terminals.

