



Product data sheet

48955/01 - Connection Box IP68 for FC E90 5G16mm² M25 Ø12.5-16mm



Connection Box for supply or branching-Fire protection box E90 Woertz IP66/ IP68, M25 Ø12.5-16mm, for cable up to 5x4mm², for flat cable Woertz E90 5G16mm², halogen-free, corrosion-protected

Characteristics

Base Unit	Piece
availability	Delivery according to agreement
EAN Code	7611718270024
group	0170000
Packaging unit	1 st
country of origin	CH
Customs tariff number	8536.9080
Weight	1,010 kg
Color	orange

Technical data

Fire load (KWh)	2,35 kWh
Dimensions length x width x height (mm)	146x85x77 mm
Dimensions length x width x height (inch)	5,74x3,34x3,03 inch
Degree of protection	IP66/IP68 (2m,30min)
Metal parts	Metal parts:V4A / Contacting : Cu alloy



Product data sheet

48955/01 - Connection Box IP68 for FC E90 5G16mm² M25 Ø12.5-16mm

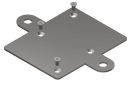
Flat cable contacting type	Piercing contact (screw) EN 60998-2-3
Number of poles	5 pole
Contacting type	Screw terminal
Connection conductor (mm ²)	5x4,0 mm ²
Thread cable gland	with cable gland M25x1.5 (IP68) D= 12.5 mm - 16.0 mm
Cable gland (mm)	12,5-16 mm
Rated current heavy current part (A)	32 (4 mm ²) A
Rated voltage heavy current part (V)	690 V
Operating Temperature	-15 to 85 °C
Installation temperature min.	5 °C
Function maintenance	E30/E90 (DIN 4102-12)
Plastic parts	Halogen-free
Material slider/bottom part	Polyamide, orange
Material housing	Polyamide, orange
Material hood	Polyamide, orange



Product data sheet

48955/01 - Connection Box IP68 for FC E90 5G16mm² M25 Ø12.5-16mm

Product accessories



48954 - Retaining plate socket E90 48953/48955

Mounting plate for flat cable box, made of chrome steel V4A, with a mounting distance of 116 mm and holes of 9.5 mm, for mounting the connecting box 48953/48955.



Product data sheet

48955/01 - Connection Box IP68 for FC E90 5G16mm² M25 Ø12.5-16mm

Product systems



FE180 E30/E90 5G16 mm²

Woertz fire safety system FE180 E30/E90 5G16 mm² for power supply of safety-relevant elements, such as emergency and escape route lighting, smoke extraction systems or fire department elevators.

