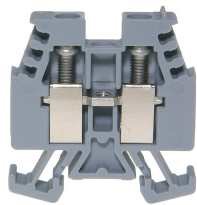




Product data sheet

30902GR - Terminal DIN15 4mm2 grey



Terminal blocks with best possible contacting, stainless steel screws, 3-digit marking option on both sides, recessed for cross-connections

Characteristics	
Eldas number	158300237
Base Unit	Piece
availability	available from stock
EAN Code	7611718221781
group	165000
Packaging unit	100
country of origin	CH
Customs tariff number	8536.9080
Weight (g)	8 g
Color	gray
Technical data	
Dimensions length x width x height (mm)	32x6x28 mm
Dimensions length x width x height (inch)	1.26x0.24x1.10 inch
Cross section (mm²)	0,2 - 4 mm²
Nominal current (A)	32 A



Product data sheet

30902GR - Terminal DIN15 4mm2 grey

Rated voltage (V)	500 V
Connection type	Screw terminal
DIN rail type	DIN-15
Number of connection point	2
Number of floor	1
Number of potentials	1
Clamping screw M	M3
Insulating material	PA66
Nominal Cross-section (mm²)	4 mm²
Stripping length mm (mm)	10 mm
Head reception room width x height (mm)	3.2x5 mm
Rating data according to UL 1059	
Rated voltage US (V)	300 V
Nominal cross section (AWG)	12 AWG
Cross-section (AWG)	12 - 24 AWG
Stripping length (inch)	0,39 inch



Product data sheet

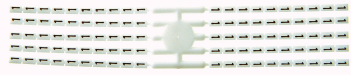
30902GR - Terminal DIN15 4mm² grey

Product accessories



Bezeichnungskarte_6x9mm - Designation card 6x9mm

Various designation plates with different embossing.



Bezeichnungskarte_6x3mm - Designation card 6x3mm

Various designation plates with different embossing.



30912 - End barrier DIN15 grey to 30902

End wall suitable for 30902

30922 - Partition DIN15 grey to 30902

Partition wall suitable for 30902



2765 - Stopper DIN15 height 20mm

Makrolon locking piece



2754 - Stopper DIN15 height 17.5mm

Locking piece made of nickel-plated brass M3 screw



81526/2 - Cross-connection 2pole to terminal 2.5mm²/4mm²

Cross connections complete with M3 screws. 11.1x17.8 mm



81526/3 - Cross-connection 3-pole to terminals DIN15/32/35 2.5mm²/4mm²

Insulated cross-connection 3-pole to terminals DIN15/32/35 2.5mm²/4mm² including screws M3. Dimension: 17.2x17.8 mm



81526/4 - Cross-connection 4-pole to terminals DIN15/32/35 2.5mm²/4mm²

Insulated cross-connection 4-pole to terminals DIN15/32/35 2.5mm²/4mm² including screws M3. Dimension: 23.3x17.8 mm



81526/5 - Cross-connection 5-pole to terminals DIN15/32/35 2.5mm²/4mm²

Insulated cross-connection 5-pole to terminals DIN15/32/35 2.5mm²/4mm² including screws M3. Dimension: 29.4x17.8 mm



81526/10 - Cross-connection 10-pole to terminals DIN15/32/35 2.5mm²/4mm²

Insulated cross-connection 10-pole to terminals DIN15/32/35 2.5mm²/4mm² including screws M3. Dimension: 59.9x17.8 mm



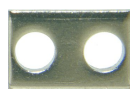
Product data sheet

30902GR - Terminal DIN15 4mm² grey



81526 - Cross connection bolt single M3, insulated (9.1 mm)

Cross connection bolt complete with spacer sleeve. 9.1 mm



30441 - Link to cross-connections

to terminals 4mm²



30791 - Cross-junction rack 10pole grey 6mm

to terminals with 6mm pin spacing



3894/4 - Cover for 4 terminals yellow

with black printing, to series 3430



3894/5 - Cover for 5 terminals yellow

with black printing, to series 3430



3894/6 - Cover for 6 terminals yellow

with black printing, to series 3430



3894/7 - Cover for 7 terminals yellow

with black printing, to series 3430



3894/8 - Cover for 8 terminals yellow

with black printing, to series 3430



81440 - Sealing eyelet Ø 3.2mm

Sealing eyes



3512 - Sealing screw M3x25 of polyamide

Sealing screw spring-loaded test probes, several numbers of poles can be lined up



Product data sheet

30902GR - Terminal DIN15 4mm2 grey

Product systems



Terminal blocks DIN15 2.5mm²/4mm²

Various terminal blocks DIN15 2.5mm²/4mm².

