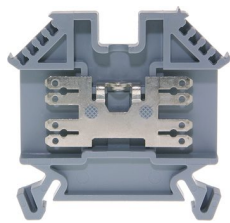




Product data sheet

30138GR - Flat connector terminals DIN35 2.5mm<sup>2</sup> gray



Flat connector terminal, dimension 50x6x42.5 mm, 2x2 tongues for insulated flat connectors, screw and spring steel

| Characteristics                           |                                 |
|---|---------------------------------|
| Eldas number                              | 158116037                       |
| Base Unit                                 | Piece                           |
| availability                              | Delivery according to agreement |
| EAN Code                                  | 7611718200861                   |
| group                                     | 165000                          |
| Packaging unit                            | 50                              |
| country of origin                         | CH                              |
| Customs tariff number                     | 8536.9080                       |
| Weight (g)                                | 7 g                             |
| Color                                     | gray                            |
| Technical data                            |                                 |
| Dimensions length x width x height (mm)   | 50x6x42.5 mm                    |
| Dimensions length x width x height (inch) | 1.97x0.24x1.67 inch             |
| Cross section (mm <sup>2</sup> )          | 0,5 - 2,5 mm <sup>2</sup>       |
| Nominal current (A)                       | 24 A                            |



Product data sheet

30138GR - Flat connector terminals DIN35 2.5mm<sup>2</sup> gray

|  |                             |
|--|-----------------------------|
| Rated voltage (V)                        | 660 V                       |
| Connection type                          | Screw terminal              |
| DIN rail type                            | DIN-35                      |
| Number of connection point               | 4                           |
| Number of floor                          | 1                           |
| Number of potentials                     | 1                           |
| Insulating material                      | PA66                        |
| Nominal Cross-section (mm <sup>2</sup> ) | 2,5 mm <sup>2</sup>         |
| Head reception room width x height (mm)  | 2 x 6.3x0.8 /4 x 2.8x0.8 mm |

Rating data according to UL 1059

|                             |             |
|-----------------------------|-------------|
| Rated voltage US (V)        | 300 V       |
| Nominal cross section (AWG) | 14 AWG      |
| Cross-section (AWG)         | 14 - 20 AWG |




## Product data sheet

30138GR - Flat connector terminals DIN35 2.5mm<sup>2</sup> gray


### Product accessories

---




**81526/2 - Cross-connection 2pole to terminal 2.5mm<sup>2</sup>/4mm<sup>2</sup>**  
Cross connections complete with M3 screws. 11.1x17.8 mm

---




**81526/3 - Cross-connection 3-pole to terminals DIN15/32/35 2.5mm<sup>2</sup>/4mm<sup>2</sup>**  
Insulated cross-connection 3-pole to terminals DIN15/32/35 2.5mm<sup>2</sup>/4mm<sup>2</sup> including screws M3. Dimension: 17.2x17.8 mm

---




**81526/4 - Cross-connection 4-pole to terminals DIN15/32/35 2.5mm<sup>2</sup>/4mm<sup>2</sup>**  
Insulated cross-connection 4-pole to terminals DIN15/32/35 2.5mm<sup>2</sup>/4mm<sup>2</sup> including screws M3. Dimension: 23.3x17.8 mm

---




**81526/5 - Cross-connection 5-pole to terminals DIN15/32/35 2.5mm<sup>2</sup>/4mm<sup>2</sup>**  
Insulated cross-connection 5-pole to terminals DIN15/32/35 2.5mm<sup>2</sup>/4mm<sup>2</sup> including screws M3. Dimension: 29.4x17.8 mm

---




**81526/10 - Cross-connection 10-pole to terminals DIN15/32/35 2.5mm<sup>2</sup>/4mm<sup>2</sup>**  
Insulated cross-connection 10-pole to terminals DIN15/32/35 2.5mm<sup>2</sup>/4mm<sup>2</sup> including screws M3. Dimension: 59.9x17.8 mm

---



**81526 - Cross connection bolt single M3, insulated (9.1 mm)**  
Cross connection bolt complete with spacer sleeve. 9.1 mm

---



**30441 - Link to cross-connections**  
to terminals 4mm<sup>2</sup>

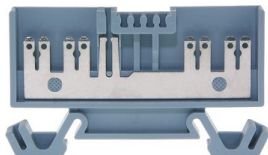
---



## Product data sheet

30138GR - Flat connector terminals DIN35 2.5mm<sup>2</sup> gray

### Product systems



#### Flat connector terminals DIN35

Various DIN35 flat connector terminals.

