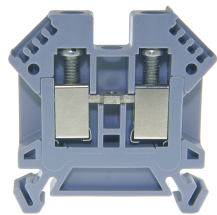




Product data sheet

3425GR - Terminal block DIN35 6mm² 49x8x45mm gray



Terminal block DIN35 6mm² 49x8x45mm grey with best possible contacting, stainless steel screws, 4-digit marking option on both sides, recessed for cross-connections

Characteristics	
Eldas number	158120337
Base Unit	Piece
availability	available from stock
EAN Code	7611718202506
group	165000
Packaging unit	50
country of origin	CH
Customs tariff number	8536.9080
Weight (g)	19 g
Color	gray
Technical data	
Dimensions length x width x height (mm)	49x8x45 mm
Dimensions length x width x height (inch)	1.93x0.32x1.77 inch
Cross section (mm ²)	0,5 - 6 mm ²
Nominal current (A)	41 A



Product data sheet

3425GR - Terminal block DIN35 6mm² 49x8x45mm gray

Rated voltage (V)	1000 V
Connection type	Screw terminal
DIN rail type	DIN-35
Smallest connectable section (mm ²)	0,5 mm ²
Number of connection point	2
Number of floor	1
Number of potentials	1
Clamping screw M	M4 (M = 1.5Nm)
Central thread M	M3 (M = 0.7Nm)
Insulating material	PA66
Nominal Cross-section (mm ²)	6 mm ²
Stripping length mm (mm)	11 mm
conductors of the same cross-section per clamping point EN60947 (mm ²)	1x6 , 2x4 , 2x2.5 mm ²
Head reception room width x height (mm)	4.5x6 mm
Rating data according to UL 1059	
Rated voltage US (V)	600 V
Nominal cross section (AWG)	10 AWG
Cross-section (AWG)	10 - 20 AWG
Smallest connectable section (AWG)	20 AWG
Stripping length (inch)	0,43 inch
Tightening torque (lb-inch)	13,3 lb-inch



Product data sheet

3425GR - Terminal block DIN35 6mm² 49x8x45mm gray

Product accessories



81548/2 - Cross-connection 2-pole to terminal blocks 6mm² for high demands

Insulated cross-connection for high demands 2-pole to terminal blocks 6mm² including screws M3. Dimension: 15.1x20.8 mm



81548/3 - Cross-connection 3-pole to DIN35 6mm² terminal blocks for high demands

Insulated cross-connection for high demands 3-pole to terminal blocks DIN35 6mm² including screws M3. Dimension: 23.2x20.8 mm



81548/4 - Cross-connection 4-pole to terminal blocks 6mm² for high demands

Insulated cross-connection for high demands 4-pole to terminal blocks 6mm² including screws M3. Dimension: 31.3x20.8 mm



81548/5 - Cross-connection 5-pole to DIN35 6mm² terminal blocks for high demands

Insulated cross-connection for high demands 5-pole to DIN35 6mm² terminal blocks including M3 screws. Dimension: 39.4x20.8 mm



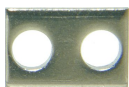
81548/10 - Cross-connection 10-pole to terminals 6mm² for high demands

Insulated cross-connection 10-pole to DIN35 6mm² terminal blocks including M3 screws. Dimension: 79.9x20.8 mm



81548 - Cross connection bolt single M3 insulated for high demands (11,5 mm)

Cross-connection bolt complete with spacer sleeve to terminal blocks for high demands. Dimension: 11.5 mm



81412L - Link to cross-connections

to terminals 6 und 10mm 2



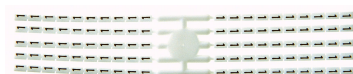
Bezeichnungskarte_6x12mm - Designation cards 6x12mm

Various designation labels 6x12mm with different embossing.



Bezeichnungskarte_6x9mm - Designation card 6x9mm

Various designation plates with different embossing.



Bezeichnungskarte_6x3mm - Designation card 6x3mm

Various designation plates with different embossing.



Product data sheet

3425GR - Terminal block DIN35 6mm² 49x8x45mm gray



30792 - Cross-junction rack 10pole grey 8mm

to terminals with 6mm pin spacing



80070R - Test plug Ø M3 red, socket 4mm

plug and adaptor in one piece



2737R - Test plug Ø 2.8mm red, socket 4mm

connecting cable incl.



3516 - End barrier DIN35 grey to 3424, 3425

End wall suitable for 3424, 3425



3506 - Partition DIN35 grey to 30128, 3424

Partition wall suitable for 3424, 3425, 30123, 30124, 30127, 30128, 30130



80255 - Push-in barrier DIN35 to 30128, 3424,

to 3425, 30138, 30137, white



30422 - Cover strip for terminal blocks 9.5mm, length 280mm

Cover strip for terminal blocks DIN32/35 9.5mm , length 280mm



3418 - Stopper DIN35 height 30mm

Makrolon locking piece



30370 - Stopper DIN35 height 23mm

Locking piece made of nickel-plated brass M3 screw



30199 - Stopper DIN35 height 50mm

Aluminum alloy locking piece



3887/4 - Cover for 4 terminals yellow

with black printing, to series 3425,345210



3887/5 - Cover for 5 terminals yellow

with black printing, to series 3425,345210



Product data sheet

3425GR - Terminal block DIN35 6mm² 49x8x45mm gray



3887/6 - Cover for 6 terminals yellow

with black printing, to series 3425,345210



3887/7 - Cover for 7 terminals yellow

with black printing, to series 3425,345210



3887/8 - Cover for 8 terminals yellow

with black printing, to series 3425,345210



81440 - Sealing eyelet Ø 3.2mm

Sealing eyes



3512 - Sealing screw M3x25 of polyamide

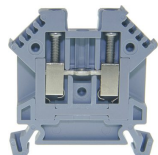
Sealing screw spring-loaded test probes, several numbers of poles can be lined up



Product data sheet

3425GR - Terminal block DIN35 6mm² 49x8x45mm gray

Product systems



Terminal blocks for high demands DIN35

Terminal blocks for high demands DIN35 with best possible contacting, stainless steel screws, 4-digit marking possibility on both sides, recessed for cross connections

