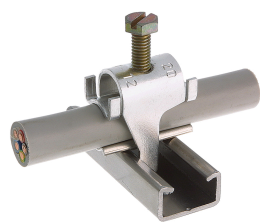




Product data sheet

43640 - Quick jig C20 48-56mm



made of aluminum alloy, hardened without cable support

Characteristics	
Eldas number	120116207
Base Unit	Piece
availability	available from stock
Packaging unit	50
Customs tariff number	761699
Technical data	
Dimensions length x width x height (mm)	64x73 mm
Clampable diameter (mm)	48-56 mm



Product data sheet

43640 - Quick jig C20 48-56mm

Product accessories



43688 - Cable support C20 48-56mm

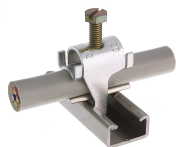
made of aluminum alloy, hardened



Product data sheet

43640 - Quick jig C20 48-56mm

Product systems



Quick installer aluminum alloy profile rail type C20



- Quick laying aluminum alloy for profile rail type C20.
 - With hexagon slotted screw.
 - For the laying of cables are always cable pads required
-