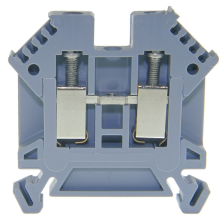




Product data sheet

3424GR - Terminal block DIN35 4mm<sup>2</sup> 49x6x45 mm gray



Terminal block DIN35 4mm<sup>2</sup> 49x6x45 mm gray with best possible contacting, stainless steel screws, 4-digit marking possibility on both sides, recessed for cross-connections

Characteristics	
Eldas number	158120237
Base Unit	Piece
availability	available from stock
EAN Code	7611718201530
group	165000
Packaging unit	50
country of origin	CH
Customs tariff number	8536.9080
Weight (g)	13 g
Color	gray
Technical data	
Dimensions length x width x height (mm)	49x6x45 mm
Dimensions length x width x height (inch)	1.93x0.24x1.77 inch
Cross section (mm <sup>2</sup> )	0,5 - 4 mm <sup>2</sup>
Nominal current (A)	32 A



## Product data sheet

### 3424GR - Terminal block DIN35 4mm<sup>2</sup> 49x6x45 mm gray

Rated voltage (V)	1000 V
Connection type	Screw terminal
DIN rail type	DIN-35
Smallest connectable section (mm <sup>2</sup> )	0,5 mm <sup>2</sup>
Number of connection point	2
Number of floor	1
Number of potentials	1
Clamping screw M	M3 (M = 0.7Nm)
Central thread M	M3 (M = 0.7Nm)
Insulating material	PA66
Nominal Cross-section (mm <sup>2</sup> )	4 mm <sup>2</sup>
Stripping length mm (mm)	10 mm
conductors of the same cross-section per clamping point EN60947 (mm <sup>2</sup> )	1x4 , 2x2,5 , 2x1,5 mm <sup>2</sup>
Head reception room width x height (mm)	3.4x6 mm
<b>Rating data according to UL 1059</b>	
Rated voltage US (V)	600 V
Nominal cross section (AWG)	12 AWG
Cross-section (AWG)	12 - 20 AWG
Smallest connectable section (AWG)	22 AWG
Stripping length (inch)	0,39 inch
Tightening torque (lb-inch)	6,2 lb-inch



## Product data sheet

3424GR - Terminal block DIN35 4mm<sup>2</sup> 49x6x45 mm gray

### Product accessories



#### 81556/2 - Cross-connection 2-pole to terminal blocks 4mm<sup>2</sup> for high demands

Insulated cross-connection for high demands 2-pole to terminal blocks 4mm<sup>2</sup> including screws M3. Dimension: 11.6x20.8 mm



#### 81556/3 - Cross-connection 3-pole to terminal blocks 4mm<sup>2</sup> for high demands

Insulated cross-connection for high demands 3-pole to terminal blocks 4mm<sup>2</sup> complete with M3 screws to terminal blocks for high demands. Dimension: 17.7x20.8 mm



#### 81556/4 - Cross-connection 4-pole to DIN35 4mm<sup>2</sup> terminal blocks for high demands

Insulated cross-connection for high demands 4-pole to terminal blocks DIN35 4mm<sup>2</sup> including screws M3. Dimension: 23.8x20.8 mm



#### 81556/5 - Cross-connection 5-pole to DIN35 4mm<sup>2</sup> terminal blocks for high demands

Insulated cross-connection for high demands 5-pole to terminal blocks DIN35 4mm<sup>2</sup> including screws M3. Dimension: 29.9x20.8 mm



#### 81556/10 - Cross-connection 10-pole to DIN35 4mm<sup>2</sup> terminal blocks for high demands

Insulated cross-connection for high demands 10-pole to DIN35 4mm<sup>2</sup> terminal blocks including M3 screws. Dimension: 60.4x20.8 mm



#### 81556 - Cross connection bolt single M3 insulated (11.5 mm)

Cross connection bolt complete with spacer sleeve. Design for high demands. 11.5 mm



#### Bezeichnungskarte\_6x12mm - Designation cards 6x12mm

Various designation labels 6x12mm with different embossing.



#### Bezeichnungskarte\_6x9mm - Designation card 6x9mm

Various designation plates with different embossing.



#### Bezeichnungskarte\_6x3mm - Designation card 6x3mm

Various designation plates with different embossing.



#### 30791 - Cross-junction rack 10pole grey 6mm

to terminals with 6mm pin spacing



#### 80070R - Test plug Ø M3 red, socket 4mm

plug and adaptor in one piece



## Product data sheet

3424GR - Terminal block DIN35 4mm<sup>2</sup> 49x6x45 mm gray



**2737R - Test plug Ø 2.8mm red, socket 4mm**  
connecting cable incl.



**3516 - End barrier DIN35 grey to 3424, 3425**  
End wall suitable for 3424, 3425



**3506 - Partition DIN35 grey to 30128, 3424**  
Partition wall suitable for 3424, 3425, 30123, 30124, 30127, 30128, 30130



**80255 - Push-in barrier DIN35 to 30128, 3424,**  
to 3425, 30138, 30137, white



**30422 - Cover strip for terminal blocks 9.5mm, length 280mm**  
Cover strip for terminal blocks DIN32/35 9.5mm , length 280mm



**3418 - Stopper DIN35 height 30mm**  
Makrolon locking piece



**30370 - Stopper DIN35 height 23mm**  
Locking piece made of nickel-plated brass M3 screw



**30199 - Stopper DIN35 height 50mm**  
Aluminum alloy locking piece



**3886/4 - Cover for 4 terminals yellow**  
with black printing, to series 3424,3450



**3886/5 - Cover for 5 terminals yellow**  
with black printing, to series 3424,3450



**3886/6 - Cover for 6 terminals yellow**  
with black printing, to series 3424,3450



**3886/7 - Cover for 7 terminals yellow**  
with black printing, to series 3424,3450



## Product data sheet

3424GR - Terminal block DIN35 4mm<sup>2</sup> 49x6x45 mm gray



### **3886/8 - Cover for 8 terminals yellow**

with black printing, to series 3424,3450



### **81440 - Sealing eyelet Ø 3.2mm**

Sealing eyes



### **3512 - Sealing screw M3x25 of polyamide**

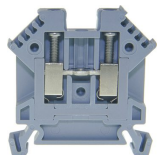
Sealing screw spring-loaded test probes, several numbers of poles can be lined up



## Product data sheet

3424GR - Terminal block DIN35 4mm<sup>2</sup> 49x6x45 mm gray

### Product systems



#### Terminal blocks for high demands DIN35

Terminal blocks for high demands DIN35 with best possible contacting, stainless steel screws, 4-digit marking possibility on both sides, recessed for cross connections

