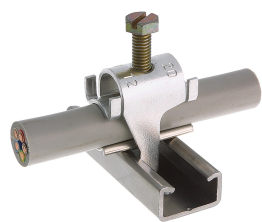




Product data sheet

43675 - Cable fixing bracket C20 25-32mm



made of aluminum alloy, hardened without cable support

Characteristics	
Eldas number	120113307
Base Unit	Piece
availability	Delivery in 4 weeks
EAN Code	7611718207105
group	171000
Packaging unit	100
country of origin	CH
Customs tariff number	761699
Weight (g)	28 g
Technical data	
Dimensions length x width x height (mm)	38x47 mm
Clampable diameter (mm)	25-32 mm



Product data sheet

43675 - Cable fixing bracket C20 25-32mm

Product accessories



43680 - Baseplate C20 25-32mm

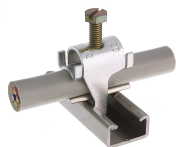
of hardened aluminium alloy



Product data sheet

43675 - Cable fixing bracket C20 25-32mm

Product systems



Quick installer aluminum alloy profile rail type C20



- Quick laying aluminum alloy for profile rail type C20.
 - With hexagon slotted screw.
 - For the laying of cables are always cable pads required
-