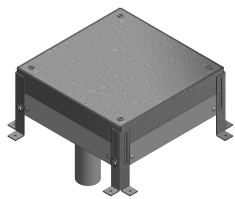




Product data sheet

51762 - Housing BAK/DRAW 150-220 St



Housing made of sendzimir-galvanized sheet steel 2mm  
with adjustable feet and floor insertion tube M50  
with temporary steel cover including screws  
Adjustment range: 150-220mm

Characteristics	
Base Unit	Piece
availability	Delivery according to agreement
group	282000
Packaging unit	1
country of origin	CH
Customs tariff number	7308.9000
Weight (g)	5980 g



## **Product data sheet**

51762 - Housing BAK/DRAW 150-220 St

### **Product accessories**

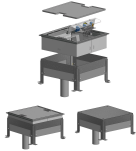


## Product data sheet

51762 - Housing BAK/DRAW 150-220 St

### Product systems

---



#### Floor junction box BAK4 to slab formwork



Plenum box BAK4 for fastening to the slab formwork.

The installation of underfloor ducts requires a minimum height of the concrete cover (60mm). If this height is not available, special boxes can be obtained for concreting into the raw slab. After fastening to the formwork, they are connected to each other with underfloor trunking 200 x 40, covered with the temporary protective cover and poured into the concrete up to the top edge.

The installation kit is mounted on the levelable box insert; the opening between the box bottom and the installation plate allows the cable to pass through to the next box. After finished wiring, an aluminum cover with cable trough is attached.

Connection box consisting of:

- Enclosure with adjustable feet, with four side openings 202 x 42 mm and a bottom entry tube M50 with temporary one-way steel cover incl. 4 screws
  - Enclosure insert made of aluminum, with frame 304 x 304
  - Aluminum lid with edge height 4 mm
  - 2 cable trays made of polycarbonate crystal clear with transparent filler piece
-



## Product data sheet

51762 - Housing BAK/DRAW 150-220 St



### Floor junction box BAK22 to slab formwork



Plenum box BAK22 for fastening to the slab formwork.

The installation of underfloor ducts requires a minimum height of the concrete overlay (60 mm). If this height is not available, special boxes can be obtained for concreting into the raw slab. After fastening to the formwork, they are connected to each other with underfloor trunking 200 x 40, covered with the temporary protective cover and cast in the concrete up to the top edge.

The installation kit is mounted on the levelable box insert; the opening between the box bottom and the installation plate allows the cable to pass through to the next box. After finished wiring, an aluminum cover with cable trough is attached.

Connection box consisting of:

- Enclosure with adjustable feet, with four side openings 202 x 42 mm and a bottom entry tube M50 with temporary one-way steel cover incl. 4 screws
- Enclosure insert made of aluminum, with frame 278 x 278
- Al cover with edge 22 mm
- 2 cable trays made of polycarbonate crystal clear with transparent filler piece