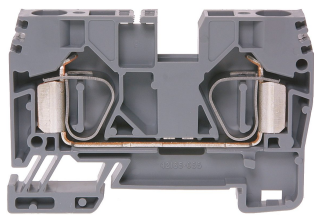




Product data sheet

35310/10GR - Tension clamp terminal DIN35 10mm² gray



Tension clamp with 2 connections Marking option on the side and in the middle with strip, recessed for cross connection

Characteristics	
Eldas number	158430437
Base Unit	Piece
availability	available from stock
EAN Code	7611718215162
group	165000
Packaging unit	50
country of origin	CH
Customs tariff number	8536.9080
Weight (g)	26 g
Color	gray
Technical data	
Dimensions length x width x height (mm)	74x10x43 mm
Dimensions length x width x height (inch)	2.91x0.39x1.69 inch
Cross section (mm ²)	1,5 - 10 mm ²
Nominal current (A)	60 A



Product data sheet

35310/10GR - Tension clamp terminal DIN35 10mm² gray

Rated voltage (V)	600 V
Connection type	Spring clamp
DIN rail type	DIN-35
Number of connection point	2
Number of floor	1
Number of potentials	1
Insulating material	PA66
Nominal Cross-section (mm²)	10 mm²
Stripping length mm (mm)	18 mm

Rating data according to UL 1059

Rated voltage US (V)	300 V
Nominal cross section (AWG)	8 AWG
Cross-section (AWG)	8 - 16 AWG
Stripping length (inch)	0,71 inch



Product data sheet

35310/10GR - Tension clamp terminal DIN35 10mm² gray

Product accessories



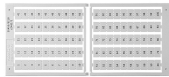
80247 - Test plug Ø 2.3mm red, socket 4mm

connecting cable incl.



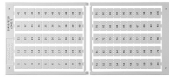
80248 - Test plug Ø 2.3mm black, socket 4mm

connecting cable incl.



Bezeichnungskarte_5x12mm - Designation card 5x12mm

Various designation plates



Bezeichnungskarte_5x9mm - Designation card 5x9mm

Various designation plates with different embossing.



35455/09BS - Marking strip 9x240mm

with 25strips per box



35455/59T - Marking adaptor for label 5x9mm

null



35311/10 - Partition and end barrier 73.5x42mm

grey, to spring clamp terminals with 2 clamps



35445 - End retainer for Spring clamp terminal DIN35

of polyamide 66, grey dimensions: 8x45.2x23.5mm to spring clamp terminals 1.5 to 16mm 2



35425/10 - Cross connector 2-pole to tension spring terminals 10mm

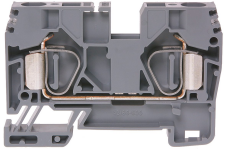
Cross connector insulated, for tension spring terminals 10mm for staggered connection of adjacent terminals. 17.9x4.1x35.2 mm



Product data sheet

35310/10GR - Tension clamp terminal DIN35 10mm² gray

Product systems



Tension clamp terminals with two connections DIN 35

Various tension spring terminals with two connections.

