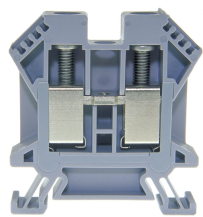




Product data sheet

3427GR - Terminal block DIN35 16mm² 55x11x55 mm gray



Terminal block DIN35 16mm² 55x11x55 mm gray with best possible contacting, stainless steel screws, 4-digit marking option on both sides, recessed for cross-connections

Characteristics	
Eldas number	158120537
Base Unit	Piece
availability	available from stock
EAN Code	7611718202544
group	165000
Packaging unit	20
country of origin	CH
Customs tariff number	8536.9080
Weight (g)	46 g
Color	gray
Technical data	
Dimensions length x width x height (mm)	55x11x55 mm
Dimensions length x width x height (inch)	2.17x0.43x2.17 inch
Cross section (mm²)	1,5 - 16 mm²
Nominal current (A)	76 A



Product data sheet

3427GR - Terminal block DIN35 16mm² 55x11x55 mm gray

Rated voltage (V)	1000 V
Connection type	Screw terminal
DIN rail type	DIN-35
Smallest connectable section (mm ²)	1,5 mm ²
Number of connection point	2
Number of floor	1
Number of potentials	1
Clamping screw M	M5 (M = 2.5Nm)
Central thread M	M4 (M = 1.5Nm)
Insulating material	PA66
Nominal Cross-section (mm ²)	16 mm ²
Stripping length mm (mm)	13 mm
conductors of the same cross-section per clamping point EN60947 (mm ²)	1x16 , 2x10 , 2x6 mm ²
Head reception room width x height (mm)	7.3x8.6 mm
Rating data according to UL 1059	
Rated voltage US (V)	600 V
Nominal cross section (AWG)	6 AWG
Cross-section (AWG)	4 - 14 AWG
Smallest connectable section (AWG)	16 AWG
Stripping length (inch)	0,51 inch
Tightening torque (lb-inch)	22,13 lb-inch



Product data sheet

3427GR - Terminal block DIN35 16mm² 55x11x55 mm gray

Product accessories



81501/2 - Cross-connection 2-pole to DIN35 16mm² terminal blocks

Insulated cross-connection 2-pole to terminal blocks DIN35 16mm² including screws M4.
Dimension: 20x29.8 mm



81501/3 - Cross-connection 3-pole to DIN35 16mm² terminal blocks

Insulated cross-connection 3-pole to terminal blocks DIN35 16mm² including screws M4.
Dimension: 31x29.8 mm



81501/4 - Cross-connection 4-pole to DIN35 16mm² terminal blocks

Insulated cross-connection 4-pole to terminal blocks DIN35 16mm² including screws M4.
Dimension: 42x29.8 mm



81501/5 - Cross-connection 5-pole to DIN35 16mm² terminal blocks

Insulated cross-connection 5-pole to terminal blocks DIN35 16mm² including screws M4.
Dimension: 53x29.8 mm



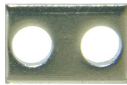
81501/10 - Cross-connection 10-pole to DIN35 16mm² terminal blocks

Insulated cross-connection 10-pole to terminal blocks DIN35 16mm² including screws M4.
Dimension: 108x29.8 mm



81501 - Separate connecting pin M4 insulated

Cross connection bolt complete with spacer sleeve



81414L - Link to cross-connections

to terminals 16mm 2



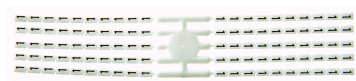
Bezeichnungskarte_6x12mm - Designation cards 6x12mm

Various designation labels 6x12mm with different embossing.



Bezeichnungskarte_6x9mm - Designation card 6x9mm

Various designation plates with different embossing.



Bezeichnungskarte_6x3mm - Designation card 6x3mm

Various designation plates with different embossing.



80071R - Test plug Ø M4 red, socket 4mm

plug and adaptor in one piece



Product data sheet

3427GR - Terminal block DIN35 16mm² 55x11x55 mm gray



3518 - End barrier DIN35 grey to 3427

End wall suitable for 3427



3508 - Partition DIN35 grey to 3427

Partition wall suitable for 3427



3418 - Stopper DIN35 height 30mm

Makrolon locking piece



30370 - Stopper DIN35 height 23mm

Locking piece made of nickel-plated brass M3 screw



30199 - Stopper DIN35 height 50mm

Aluminum alloy locking piece



3868/4 - Cover for 4 terminals yellow

with black printing, to series 3427,345216



3868/5 - Cover for 5 terminals yellow

with black printing, to series 3427,345216



3868/6 - Cover for 6 terminals yellow

with black printing, to series 3427,345216



3868/7 - Cover for 7 terminals yellow

with black printing, to series 3427,345216



3868/8 - Cover for 8 terminals yellow

with black printing, to series 3427,345216



81441 - Sealing eyelet Ø 4.2mm

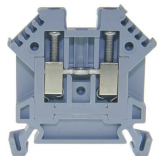
Sealing eyes



Product data sheet

3427GR - Terminal block DIN35 16mm² 55x11x55 mm gray

Product systems



Terminal blocks for high demands DIN35

Terminal blocks for high demands DIN35 with best possible contacting, stainless steel screws, 4-digit marking possibility on both sides, recessed for cross connections

