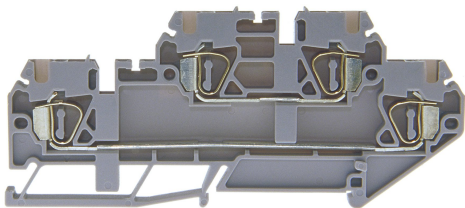




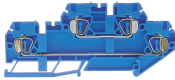

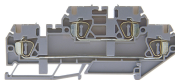






System overview

Double level tension spring terminals DIN 35



Various double-deck tension spring clamps.

Components

	<p>35320/3BL - Double level tension spring terminal DIN35 2.5mm² blue</p> <p>Double level tension spring clamp with 2x2 connections Marking possibility on the side and in the middle with stripes, recessed for cross connection</p>	
	<p>35320/3GR - Double level tension spring terminal DIN35 2.5mm² gray</p> <p>Double level tension spring clamp with 2x2 connections Marking possibility on the side and in the middle with stripes, recessed for cross connection</p>	
	<p>35320/4BL - Double level tension spring terminal DIN35 4mm² blue</p> <p>Blue double level tension spring terminal DIN35 4mm² with 2x2 connections Marking possibility on the side and in the middle with stripes, for cross connection. recessed</p>	
	<p>35320/4GR - Double level tension spring terminal DIN35 4mm² gray</p> <p>Gray double level tension spring terminal DIN35 4mm² with 2x2 connections Marking possibility on the side and in the middle with stripes, for cross connection. recessed</p>	
	<p>35320/4E - Double level tension spring terminal DIN35 4mm² green-yellow</p> <p>Green-yellow double level tension spring terminal DIN35 4mm² with 2x2 connections Marking possibility on the side and in the middle with stripes, recessed for cross connection.</p>	