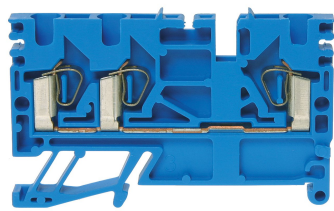




Product data sheet

35330/2BL - Tension clamp terminal DIN35 1.5mm² blue



Tension clamp with 2 connections Marking option on the side and in the middle with strip, recessed for cross connection

Characteristics	
Eldas number	158440057
Base Unit	Piece
availability	Delivery according to agreement
EAN Code	7611718217548
group	165000
Packaging unit	50
country of origin	CH
Customs tariff number	8536.9080
Weight (g)	7 g
Color	blue
Technical data	
Dimensions length x width x height (mm)	58.7x5x31.2 mm
Dimensions length x width x height (inch)	2.31x0.20x1.23 inch
Cross section (mm²)	0,2 - 1,5 mm²
Nominal current (A)	10 A



Product data sheet

35330/2BL - Tension clamp terminal DIN35 1.5mm² blue

Rated voltage (V)	600 V
Connection type	Spring clamp
DIN rail type	DIN-35
Number of connection point	3
Number of floor	1
Number of potentials	1
Insulating material	PA66
Nominal Cross-section (mm ²)	1,5 mm ²
Stripping length mm (mm)	8 mm

Rating data according to UL 1059

Rated voltage US (V)	300 V
Nominal cross section (AWG)	16 AWG
Cross-section (AWG)	16 - 26 AWG
Stripping length (inch)	0,32 inch



Product data sheet

35330/2BL - Tension clamp terminal DIN35 1.5mm² blue

Product accessories



Bezeichnungskarte_5x9mm - Designation card 5x9mm

Various designation plates with different embossing.



35455/09BS - Marking strip 9x240mm

with 25strips per box



35455/59T - Marking adaptor for label 5x9mm

null



35331/2 - Partition and end barrier 59x36mm

grey, to spring clamp terminals with 3 clamps



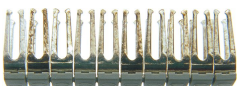
35445 - End retainer for Spring clamp terminal DIN35

of polyamide 66, greydimensions: 8x45.2x23.5mm to spring clamp terminals 1.5 to 16mm 2



35425/05 - Center jumper cover grey

Cross-connection rake insulated, gray, to tension spring terminals 5mm



35425/05BR - Bridge to cross-junction rack grey

Bridge insulated, suitable for 3542505 to connect 2 connecting rakes. 33.2x6x10.4 mm



35435/302 - Cable entrance to 0.2mm² conductors

funnel-shaped, to spring clamp terminals 1.5 and 2.5mm 2Stripes of 10 pieces, separable



35435/305 - Cable entrance to 0.5mm² conductors

funnel-shaped, to spring clamp terminals 1.5 and 2.5mm 2Stripes of 10 pieces, separable



35435/310 - Cable entrance to 1mm² conductors

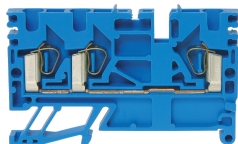
funnel-shaped, to spring clamp terminals 1.5 and 2.5mm 2Stripes of 10 pieces, separable



Product data sheet

35330/2BL - Tension clamp terminal DIN35 1.5mm² blue

Product systems



Tension clamp terminals with three connections DIN 35

Various tension spring terminals with three connections.

