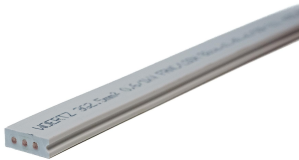




Product data sheet

49686 - Flat cable 3G2.5mm² HF GY 2.0



Flat cable Woertz 3x2.5mm 2FR/LS0H light grey LNPE

Characteristics	
Eldas number	113307807
Base Unit	Meter
availability	available from stock
EAN Code	7611718236372
group	170000
Packaging unit	-
country of origin	CH
Customs tariff number	854449
Weight (g)	185 g
Copper weight (g)	72 g
Technical data	
Construction (mm²)	3x2.5 mm²
Dimensions width x height (mm)	16.5x6 mm
Halogen free	Yes
Cable type	Halogen free flat cable



## Product data sheet

### 49686 - Flat cable 3G2.5mm² HF GY 2.0

International designation	N1Z1Z1H2-K
Reaction to fire classification	B2ca s1 d0 a1
Fire behavior	Cables with non-critical behavior (according to VKF 14-15)
Cross section (mm²)	2.5 mm²
Copper conductor	Tinned, flexible KL5 EN60228
Conductor resistance (ohm/km)	8,21 ohm/km
cores insulation	Flame retardant polyolefin
Sheat insulation	Polyolefin flame retardant
Sheath color	Light gray
Minimum bending radius	6xH
Operating Temperature (°C)	-25 till 90 °C
Installation temperature min. (°C)	5 °C
Nominal voltage (VAC)	600/1000 VAC
Test voltage	4 kV/50Hz
Fire load (kWh/m)	0,55
Halogen free acc. to	IEC/EN60754-1/2
Flame retardant according to	IEC/EN60332-1-2
Minimal smoke emission acc. to	IEC/EN 61034-2
Low fire propagation acc. To	IEC/EN 60332-3-24



## Product data sheet

49686 - Flat cable 3G2.5mm<sup>2</sup> HF GY 2.0

### Product accessories



#### **49462 - Fastening clamp FC 3G2.5 / 4mm<sup>2</sup> V4A**

Cable clamp for screwing on



#### **49693 - Cable clamp to FK 3G2.5/4 mm<sup>2</sup>**

to screw on



#### **49960 - Insulating pad for flat cable**

Scotch 2210



#### **48510/03 - End piece FC 3G2.5 / 4mm<sup>2</sup> IP68**

3G4



#### **49385 - Riser clamp**

Max. Bridge load: 50kg. For flat cable: Woertz data 2x1.5 mm<sup>2</sup>, Woertz multibus 4x1.5 mm<sup>2</sup>, Woertz 3G2.5 and 4 mm<sup>2</sup>



#### **49935 - Cutting shears up to 6 mm<sup>2</sup>**

Woertz flat cable shears up to 5x6 mm<sup>2</sup> (with higher force up to 5x16 mm<sup>2</sup>)



## Product data sheet

49686 - Flat cable 3G2.5mm<sup>2</sup> HF GY 2.0

### Product systems



#### Flat cable system 3G2.5 mm<sup>2</sup> and 3G4 mm<sup>2</sup>

Effortless installation. Limitless flexibility. Discover the versatile system for workshops, commercial spaces and laboratories.



#### Flat cable system IP 3G2.5 mm<sup>2</sup> and 3G4 mm<sup>2</sup> (IP66/68)

This system is used in tunnelling, civil engineering, industrial plants, workshops and joineries, as well as outdoors for events and open airs, due to its high IP protection level and extraordinary flexibility in terms of changeability and expandability.

