



Product data sheet

52079 - Al frame DAK 8825 280x280 TSF



made of aluminum with protective flange

Characteristics	
Base Unit	Piece
availability	Delivery according to agreement
EAN Code	7611718229169
group	282000
Packaging unit	230
country of origin	CH
Weight (g)	546 g
Technical data	
Nominal mass	280x280



## **Product data sheet**

52079 - Al frame DAK 8825 280x280 TSF

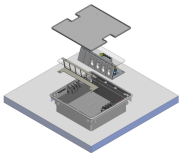
### **Product accessories**



Product data sheet

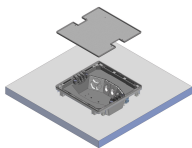
52079 - AI frame DAK 8825 280x280 TSF

Product systems



DAK 8825 280x280 square with built-in housing

Raised floor system DAK 8825 280x280 square with built-in housing.



DAK 8825 280x280 square with mounting tray

Raised floor system DAK 8825 280x280 square with built-in tray.

