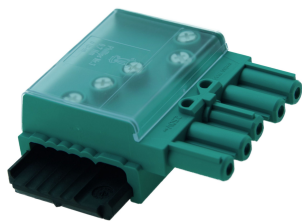




Product data sheet

49715D/L2 - Junction box Flachkabel DALI 5G Bus 5P(Bus) C2 Q L2



Junction box outer conductor L2 with socket 5-pole Code2

Characteristics	
Eldas number	150783137
Base Unit	Piece
availability	available from stock
EAN Code	7611718270819
group	170000
Packaging unit	50
country of origin	CH
Customs tariff number	8536.9080
Weight (g)	65 g
Color	pastel blue
Coding plug connection	Code 2
Technical data	
Box Type	Junction boxes
Fire load (KWh)	0,28 kWh
Dimensions length x width x height (mm)	54x57,5x25,7 mm



Product data sheet

49715D/L2 - Junction box Flachkabel DALI 5G Bus 5P(Bus) C2 Q L2

Dimensions length x width x height (inch)	2,13x2,26x1,01 inch
Degree of protection	IP20, IP40 (Connected)
Metal parts	Corrosion protected
Flat cable contacting type	Piercing contact (screw)
Number of poles	3 pole bus 2 pole
Rated current bus section (A)	16 A
Rated voltage bus part (V)	250 V
Rated current heavy current part (A)	16 A
Rated voltage heavy current part (V)	250 V
Operating Temperature (°C)	-15 to 85 °C
Installation temperature min. (°C)	5 °C
Plastic parts	Halogen-free
Material gate valve/bottom part bus	Polyamide
Material housing bus	Polyamide pastel blue
Material hood bus	Polycarbonate, transparent
Material slider/bottom part	Polyamide
Material housing	Polyamide pastel blue
Material hood	Polycarbonate, transparent
Number Screwdriver Pointed Screws Bus Part	1
Service torque Pointed screws Bus part (Nm)	0,7 Nm
Number Screwdriver Pointed screws Heavy current part	1



Product data sheet

49715D/L2 - Junction box Flachkabel DALI 5G Bus 5P(Bus) C2 Q L2




Operating torque of pointed screws for heavy current section (Nm)	0,7 Nm
---	--------



Product data sheet

49715D/L2 - Junction box Flachkabel DALI 5G Bus 5P(Bus) C2 Q L2

Product accessories

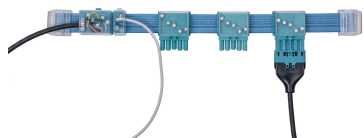
	49738 - Slide with plates combi / DALI with fixing brackets
	49750 - Locking to connectors For mechanical connection of socket to plug 3 and 5 poles
	Stecker_02_05 - Connexions enfichable Code 2 pour commande d'éclairage DALI, 5 null



Product data sheet

49715D/L2 - Junction box Flachkabel DALI 5G Bus 5P(Bus) C2 Q L2

Product systems



Flat cable system Dali 5G2.5 2x1.5 mm²

This flexible system combines power current and Dali bus line in one cable application. It is the basis for decentralized lighting control.

The areas of application are office and public buildings, industrial buildings, hotels but also modular buildings with a high degree of prefabrication.

