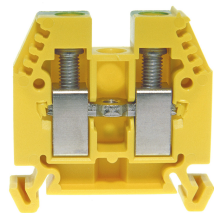




Product data sheet

3452/16E - Terminal block DIN35 16mm² 45x11x42mm green-yellow insulated



Terminal block DIN35 16mm² 45x11x42mm green-yellow insulated with best possible contacting, stainless steel screws, 4-digit marking possibility on both sides, recessed for cross-connections

Characteristics	
Eldas number	158110567
Base Unit	Piece
availability	Delivery in 4 weeks
EAN Code	7611718220784
group	165000
Packaging unit	25
country of origin	CH
Customs tariff number	8536.9080
Weight (g)	27 g
Color	green/yellow
Technical data	
Dimensions length x width x height (mm)	45x11x42 mm
Dimensions length x width x height (inch)	1.77x0.43x1.65 inch
Cross section (mm²)	1,5 - 16 mm²
Nominal current (A)	76 A



## Product data sheet

### 3452/16E - Terminal block DIN35 16mm<sup>2</sup> 45x11x42mm green-yellow insulated

Rated voltage (V)	1000 V
Connection type	Screw terminal
DIN rail type	DIN-35
Smallest connectable section (mm <sup>2</sup> )	1,5 mm <sup>2</sup>
Number of connection point	2
Number of floor	1
Number of potentials	1
Clamping screw M	M5 (M = 2.1Nm)
Central thread M	M4 (M = 1.5Nm)
Insulating material	PA66
Nominal Cross-section (mm <sup>2</sup> )	16 mm <sup>2</sup>
Stripping length mm (mm)	13 mm
conductors of the same cross-section per clamping point EN60947 (mm <sup>2</sup> )	1x16 , 1x10 , 2x6 mm <sup>2</sup>
Head reception room width x height (mm)	6.5x6.8 mm
<b>Rating data according to UL 1059</b>	
Rated voltage US (V)	600 V
Nominal cross section (AWG)	6 AWG
Cross-section (AWG)	4 - 14 AWG
Smallest connectable section (AWG)	16 AWG
Stripping length (inch)	0,51 inch
Tightening torque (lb-inch)	18,6 lb-inch



## Product data sheet

3452/16E - Terminal block DIN35 16mm<sup>2</sup> 45x11x42mm green-yellow insulated

### Product accessories



**80071R - Test plug Ø M4 red, socket 4mm**

plug and adaptor in one piece



**80071S - Test plug Ø M4 black, socket 4mm**

plug and adaptor in one piece



**80070S - Test plug Ø M3 black, socket 4mm**

plug and adaptor in one piece



**2737R - Test plug Ø 2.8mm red, socket 4mm**

connecting cable incl.



**3957 - Marking strip 6x3mm unprinted white**

Sales content with 100 tags per box



**3464 - End barrier DIN-35 grey to 3452/6**

End panel suitable for 3452/6, 3452/10, 3452/16



**3465 - Partition DIN35 grey to 3452/6, 3452/10**

Partition wall suitable for 3452/6, 3452/10 and 3452/16



**3418 - Stopper DIN35 height 30mm**

Makrolon locking piece



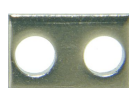
**30370 - Stopper DIN35 height 23mm**

Locking piece made of nickel-plated brass M3 screw



**81541 - Cross connection bolt single M4 insulated (12.2 mm)**

Cross connection bolt complete with spacer sleeve. 12.2 mm



**81414L - Link to cross-connections**

to terminals 16mm<sup>2</sup>



**80049/16 - Warning plate for single terminal 16mm<sup>2</sup>**

to series 345216



## Product data sheet

3452/16E - Terminal block DIN35 16mm<sup>2</sup> 45x11x42mm green-yellow insulated



### 3868/4 - Cover for 4 terminals yellow

with black printing, to series 3427,345216



### 81441 - Sealing eyelet Ø 4.2mm

Sealing eyes



### 81541/2 - Cross-connection 2-pole to DIN32/35 16mm<sup>2</sup> terminal blocks

Insulated cross-connection 2-pole to terminal blocks DIN32/35 16mm<sup>2</sup> including screws M4.  
Dimension: 20x29.8 mm



### 81541/3 - Cross-connection 3-pole to DIN32/35 16mm<sup>2</sup> terminal blocks

Insulated cross-connection 3-pole to terminal blocks DIN32/35 16mm<sup>2</sup> including screws M4.  
Dimension: 31x29.8 mm



### 81541/4 - Cross-connection 4-pole to DIN32/35 16mm<sup>2</sup> terminal blocks

Insulated cross-connection 4-pole to terminal blocks DIN32/35 16mm<sup>2</sup> including screws M4.  
Dimension: 42x29.8 mm



### 81541/5 - Cross-connection 5-pole to DIN32/35 16mm<sup>2</sup> terminal blocks

Insulated cross-connection 5-pole to terminal blocks DIN32/35 16mm<sup>2</sup> including screws M4.  
Dimension: 53x29.8 mm



### 81541/10 - Cross-connection 10-pole to DIN32/35 16mm<sup>2</sup> terminal blocks

Insulated cross-connection 10-pole to DIN32/35 16mm<sup>2</sup> terminal blocks including M4 screws.  
Dimension: 108x29.8 mm



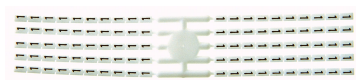
### Bezeichnungskarte\_6x12mm - Designation cards 6x12mm

Various designation labels 6x12mm with different embossing.



### Bezeichnungskarte\_6x9mm - Designation card 6x9mm

Various designation plates with different embossing.



### Bezeichnungskarte\_6x3mm - Designation card 6x3mm

Various designation plates with different embossing.



### 3868/5 - Cover for 5 terminals yellow

with black printing, to series 3427,345216



Product data sheet

3452/16E - Terminal block DIN35 16mm<sup>2</sup> 45x11x42mm green-yellow insulated



**3868/6 - Cover for 6 terminals yellow**

with black printing, to series 3427,345216



**3868/7 - Cover for 7 terminals yellow**

with black printing, to series 3427,345216



**3868/8 - Cover for 8 terminals yellow**

with black printing, to series 3427,345216



## Product data sheet

3452/16E - Terminal block DIN35 16mm<sup>2</sup> 45x11x42mm green-yellow insulated

### Product systems

---



#### Terminal blocks DIN35 2.5mm<sup>2</sup>-70mm<sup>2</sup>

DIN35 terminal blocks 2.5mm<sup>2</sup>-70mm<sup>2</sup> with best possible contacting, stainless steel screws, 4-digit marking option on both sides, recessed for cross-connections

