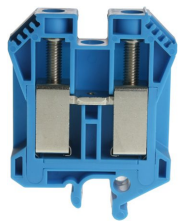




Product data sheet

3305BL - Terminal DIN32 50mm2 blue



Characteristics	
Eldas number	158210757
Base Unit	Piece
availability	Delivery according to agreement
EAN Code	7611718205446
group	165000
Packaging unit	20
country of origin	CH
Customs tariff number	8536.9080
Weight (g)	60,2 g
Color	blue
Technical data	
Dimensions length x width x height (mm)	60x14x64 mm
Dimensions length x width x height (inch)	2.36x0.55x2.52 inch
Cross section (mm²)	25 - 50 mm²
Nominal current (A)	125 A



Product data sheet

3305BL - Terminal DIN32 50mm2 blue

Rated voltage (V)	1000 V
Connection type	Screw terminal
DIN rail type	DIN-32
Number of connection point	2
Number of floor	1
Number of potentials	1
Clamping screw M	M6
Insulating material	PA66
Nominal Cross-section (mm²)	50 mm²
Stripping length mm (mm)	17 mm
Head reception room width x height (mm)	9.6x14.6 mm
Rating data according to UL 1059	
Rated voltage US (V)	600 V
Nominal cross section (AWG)	1 AWG
Cross-section (AWG)	2 - 14 AWG
Stripping length (inch)	0,67 inch



## Product data sheet

3305BL - Terminal DIN32 50mm<sup>2</sup> blue

### Product accessories



**80071R - Test plug Ø M4 red, socket 4mm**

plug and adaptor in one piece



**80071S - Test plug Ø M4 black, socket 4mm**

plug and adaptor in one piece



**Bezeichnungskarte\_6x12mm - Designation cards 6x12mm**

Various designation labels 6x12mm with different embossing.



**Bezeichnungskarte\_6x9mm - Designation card 6x9mm**

Various designation plates with different embossing.



**Bezeichnungskarte\_6x3mm - Designation card 6x3mm**

Various designation plates with different embossing.



**3758 - Stopper DIN32 height 30mm**

from polyamide gray



**3749 - Stopper DIN32 height 28mm**

of anticorodal



**81504/2 - Cross-connection 2-pole to DIN32/35 50mm<sup>2</sup> terminal blocks**

Insulated cross-connection 2-pole to terminal blocks DIN32/35 50mm<sup>2</sup> including screws M4.  
Dimension: 26.1x35.8 mm



**81504/3 - Cross-connection 3-pole to DIN32/35 50mm<sup>2</sup> terminal blocks**

Insulated cross-connection 3-pole to terminal blocks DIN32/35 50mm<sup>2</sup> including screws M4.  
Dimension: 40.2x35.8 mm



**81504/4 - Cross-connection 4-pole to DIN32/35 50mm<sup>2</sup> terminal blocks**

Insulated cross-connection 4-pole to terminal blocks DIN32/35 50mm<sup>2</sup> including screws M4.  
Dimension: 54.3x35.8 mm



**81504/5 - Cross-connection 5-pole to DIN32/35 50mm<sup>2</sup> terminal blocks**

Insulated cross-connection 5-pole to terminal blocks DIN32/35 50mm<sup>2</sup> including screws M4.  
Dimension: 68.4x35.8 mm



## Product data sheet

3305BL - Terminal DIN32 50mm<sup>2</sup> blue



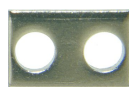
### 81504/10 - Cross-connection 10-pole to DIN32/35 50mm<sup>2</sup> terminal blocks

Insulated cross-connection 10-pole to DIN32/35 50mm<sup>2</sup> terminal blocks including M4 screws.  
Dimension: 138.9x35.8 mm



### 81504 - Cross connection bolt single M4 insulated (20 mm)

Cross connection bolt complete with spacer sleeve. 20 mm



### 81415L - Link to cross-connections

to terminals 35mm 2



### 3869/4 - Cover for 4 terminals yellow

with black printing, to series 3428



### 3869/5 - Cover for 5 terminals yellow

with black printing, to series 3428



### 3869/6 - Cover for 6 terminals yellow

with black printing, to series 3428



### 3869/7 - Cover for 7 terminals yellow

with black printing, to series 3428



### 3869/8 - Cover for 8 terminals yellow

with black printing, to series 3428



### 81441 - Sealing eyelet Ø 4.2mm

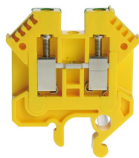
Sealing eyes



Product data sheet

3305BL - Terminal DIN32 50mm2 blue

Product systems



Terminal blocks DIN32 2.5mm<sup>2</sup>-70mm<sup>2</sup>

Various terminal blocks DIN32 2.5mm<sup>2</sup>-70mm<sup>2</sup>.

