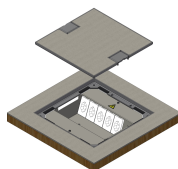




System overview

DAK5 278x278 Cr KA



Raised floor system DAK5 278x278 square
with installation kit and protective housing

Components



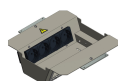
56278/5KA - Bushings 271 DAK5 AI KA

Hanging plate for cutout 283x283 made of sendzimir galvanized steel sheet 1.5mm
with frame 278x278x19mm made of chrome steel 3mm
- with lid support rubber 2mm
Lid with edge 271x271x19mm made of chrome steel 3mm
- with wooden lid insert 6mm
- occupiable inside 5mm
- including 2 chrome steel cable exits



52060 - Installation kit 2x3FLF horizontal empty BAK22

hook-in, to BAK with protective edge 12mm and 22mm
made of galvanized sheet steel 1.5mm
including 2 mounting plates
color: RAL 7032 pebble gray
equipped with: 1 pc. Terminal strip 7x2.5mm²
minimum floor height: BAK12=74mm; BAK22=84mm



52058 - Installation kit 2x8 module-BT empty BAK22 / DAK22

for modules type bticino
mountable, to BAK and DAK with protective edge 22mm
including 2 holding plates and 2 mounting plates
color: RAL 7032 pebble gray
equipped with: 1 pc. Terminal strip 9x2.5mm²
minimum floor height: BAK12=89mm; BAK22=99mm



52960 - Protective housing FLF horizontal DAK22

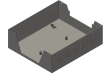
suitable for installation kit 52030 and 52060,
as a lower cover of the installation kit,
can be mounted with an installation kit from above,
made of galvanized sheet steel 1mm color: RAL 7032 pebble gray





System overview

DAK5 278x278 Cr KA



52940 - Protective housing FLF standing DAK22

suitable for installation kit 52040 and 52050,
as a lower cover of the installation kit,
can be mounted with an installation kit from above,
made of galvanized sheet steel 1mm color: RAL 7032 pebble gray



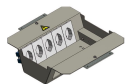
56278/5 - Floor bushing 271 DAK/ZUG5 Cr

Hanging plate for cutout 283x283 made of sendzimir galvanized steel sheet 1.5mm
with frame 278x278x19mm made of chrome steel 3mm
- with lid support rubber 2mm
Lid with edge 271x271x19mm made of chrome steel 3mm
- with wooden lid insert 6mm
- occupiable inside 5mm



52030 - Installation kit 2x3FLF horizontal SB BAK22

hook-in, to BAK with protective edge 12mm and 22mm
made of galvanized sheet steel 1.5mm
including 2 mounting plates
color: RAL 7032 pebble gray
equipped, wired and tested: 1 pc. Terminal block 7x2.5mm²
3 pcs. socket FLF 3/5 T13 white 55200
minimum floor height: BAK12=74mm; BAK22=84mm



52050 - Installation kit 2x5FLF vertical SB BAK22

hook-in, to BAK with protective edge 12mm and 22mm
including 2 mounting plates
Color: RAL 7032 pebble gray
equipped, wired and tested: 1 pcs. Terminal strip 9x2.5mm²
5 pcs. socket FLF 3/5 T13 white 55200
Minimum floor height: BAK12=89mm; BAK22=99mm



52040 - Installation kit 2x5FLF vertical empty BAK22

hook-in, to BAK with protective edge 12mm and 22mm
made of galvanized sheet steel 1.5mm
including 2 mounting plates
color: RAL 7032 pebble gray
equipped with: 1 pc. Terminal strip 9x2.5mm²
minimum floor height: BAK12=89mm; BAK22=99mm





System overview

DAK5 278x278 Cr KA



52073 - Installation kit 2x8 module-LM empty BAK22 / DAK22

for modules type Legrand Mosaic
hangle, to BAK with protective edge 12mm and 22mm
including 2 mounting plates
color: RAL 7032 pebble gray
equipped with: 1 pc. Terminal strip 9x2.5mm²
minimum floor height: BAK12=89mm; BAK22=99mm

