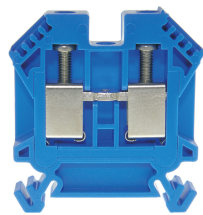




Product data sheet

3426BL - Terminal block DIN35 10mm² 52x9x51mm blue



Terminal block DIN35 10mm² 52x9x51mm blue with best possible contact, stainless steel screws, 4-digit marking option on both sides, recessed for cross-connections

Characteristics	
Eldas number	158120457
Base Unit	Piece
availability	Delivery in 4 weeks
EAN Code	7611718202513
group	165000
Packaging unit	25
country of origin	CH
Customs tariff number	8536.9080
Weight (g)	27 g
Color	blue
Technical data	
Dimensions length x width x height (mm)	52x9x51 mm
Dimensions length x width x height (inch)	2.05x0.35x2.01 inch
Cross section (mm²)	1 - 10 mm²
Nominal current (A)	57 A



## Product data sheet

### 3426BL - Terminal block DIN35 10mm<sup>2</sup> 52x9x51mm blue

Rated voltage (V)	1000 V
Connection type	Screw terminal
DIN rail type	DIN-35
Smallest connectable section (mm <sup>2</sup> )	1 mm <sup>2</sup>
Number of connection point	2
Number of floor	1
Number of potentials	1
Clamping screw M	M4 (M = 1.5Nm)
Central thread M	M3 (M = 0.7Nm)
Insulating material	PA66
Nominal Cross-section (mm <sup>2</sup> )	10 mm <sup>2</sup>
Stripping length mm (mm)	13 mm
conductors of the same cross-section per clamping point EN60947 (mm <sup>2</sup> )	1x10 , 2x6 , 2x4 mm <sup>2</sup>
Head reception room width x height (mm)	5.8x7.5 mm
<b>Rating data according to UL 1059</b>	
Rated voltage US (V)	600 V
Nominal cross section (AWG)	8 AWG
Cross-section (AWG)	8 - 18 AWG
Smallest connectable section (AWG)	18 AWG
Stripping length (inch)	0,51 inch
Tightening torque (lb-inch)	13,27 lb-inch



## Product data sheet

3426BL - Terminal block DIN35 10mm<sup>2</sup> 52x9x51mm blue

### Product accessories



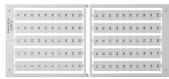
**80070R - Test plug Ø M3 red, socket 4mm**

plug and adaptor in one piece



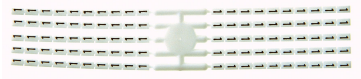
**2737R - Test plug Ø 2.8mm red, socket 4mm**

connecting cable incl.



**Bezeichnungskarte\_6x9mm - Designation card 6x9mm**

Various designation plates with different embossing.



**Bezeichnungskarte\_6x3mm - Designation card 6x3mm**

Various designation plates with different embossing.



**Bezeichnungskarte\_6x12mm - Designation cards 6x12mm**

Various designation labels 6x12mm with different embossing.



**3517 - End barrier DIN35 grey to 3426**

End wall suitable for 3426



**3507 - Partition DIN35 grey to 3426**

Partition wall suitable for 3426



**3418 - Stopper DIN35 height 30mm**

Makrolon locking piece



**30370 - Stopper DIN35 height 23mm**

Locking piece made of nickel-plated brass M3 screw



**30199 - Stopper DIN35 height 50mm**

Aluminum alloy locking piece



**81549/2 - Cross-connection 2-pole to DIN35 10mm<sup>2</sup> terminal blocks**

Insulated cross-connection 2-pole to terminal blocks DIN35 10mm<sup>2</sup> including screws M3.  
Dimension: 17.1x26.8 mm



## Product data sheet

3426BL - Terminal block DIN35 10mm<sup>2</sup> 52x9x51mm blue



### 81549/3 - Cross-connection 3-pole to DIN35 10mm<sup>2</sup> terminal blocks

Insulated cross-connection 3-pole to terminal blocks DIN35 10mm<sup>2</sup> including screws M3.  
Dimension: 26.2x26.8 mm



### 81549/4 - Cross-connection 4-pole to DIN35 10mm<sup>2</sup> terminal blocks

Insulated cross-connection 4-pole to DIN35 10mm<sup>2</sup> terminal blocks including M3 screws.  
Dimension: 35.3x26.8 mm



### 81549/5 - Cross-connection 5pole to terminal 10mm<sup>2</sup>

Cross connections complete with M3 screws. 44.4x26.8 mm



### 81549/10 - Cross-connection 10-pole to DIN35 10mm<sup>2</sup> terminal blocks

Insulated cross-connection 10-pole to DIN35 10mm<sup>2</sup> terminal blocks including M3 screws.  
Dimension: 89.9x26.8 mm



### 81413L - Link to cross-connections

to terminals 10mm<sup>2</sup>



### 30422 - Cover strip for terminal blocks 9.5mm, length 280mm

Cover strip for terminal blocks DIN32/35 9.5mm , length 280mm



### 3868/4 - Cover for 4 terminals yellow

with black printing, to series 3427,345216



### 3868/5 - Cover for 5 terminals yellow

with black printing, to series 3427,345216



### 3868/6 - Cover for 6 terminals yellow

with black printing, to series 3427,345216



### 3868/7 - Cover for 7 terminals yellow

with black printing, to series 3427,345216



### 3868/8 - Cover for 8 terminals yellow

with black printing, to series 3427,345216



### 81440 - Sealing eyelet Ø 3.2mm

Sealing eyes



## Product data sheet

3426BL - Terminal block DIN35 10mm<sup>2</sup> 52x9x51mm blue



### **3512 - Sealing screw M3x25 of polyamide**

Sealing screw spring-loaded test probes, several numbers of poles can be lined up

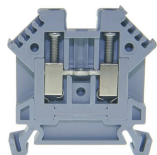


## Product data sheet

3426BL - Terminal block DIN35 10mm<sup>2</sup> 52x9x51mm blue

### Product systems

---



#### Terminal blocks for high demands DIN35

Terminal blocks for high demands DIN35 with best possible contacting, stainless steel screws, 4-digit marking possibility on both sides, recessed for cross connections

