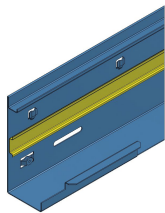




Product data sheet

59471 - Channel shell FnW KOK 180x90



made of sendzimir-galvanized steel sheet 1.5mm with DIN-35 rail  
with 4xFLF 3/5 and 1xFLF 6/5 pre-punching per meter in the channel tray bottom  
including connecting material and ground wire  
color: at choice  
length: 2000mm

Characteristics	
Base Unit	Piece
availability	Delivery according to agreement
group	999000
Packaging unit	1
country of origin	CH
Customs tariff number	7308.9000
Technical data	
Nominal mass	180x90



## **Product data sheet**

59471 - Channel shell FnW KOK 180x90

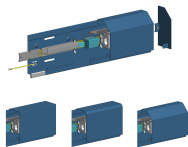
### **Product accessories**



Product data sheet

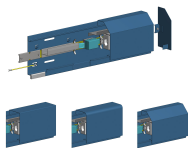
59471 - Channel shell FnW KOK 180x90

Product systems



Combination trunking system KOK 180x90

Combination duct KOK 180x90 mm.



Combination trunking system KOK 180x90 as base trunking

Combination trunking KOK 180x90 mm as base trunking. With suspension cover.

