



Product data sheet

80291/2M - Combination rail DIN35/C30 of aluminum 2 m



Combination rail Extrudal-050 DIN35/C30, with 35x15x1 mm made of aluminum alloy, with a 85 mm² copper cross-section, 2 m length.

Characteristics	
Eldas number	168000527
Base Unit	Meter
availability	Delivery in 4 weeks
Packaging unit	2
Customs tariff number	7604.2900
Technical data	
Dimensions length x width x height (mm)	35x15x1 mm
Material	Stainless steel



## **Product data sheet**

80291/2M - Combination rail DIN35/C30 of aluminum 2 m

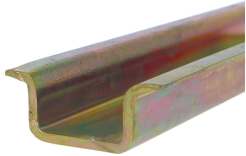
### **Product accessories**



## Product data sheet

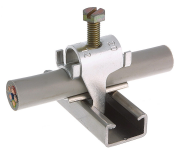
80291/2M - Combination rail DIN35/C30 of aluminum 2 m

### Product systems



#### Profile rails DIN15, DIN32, DIN35

Various mounting rails and combination rails.



#### Quick installer aluminum alloy for profile rail type C30

Aluminum alloy quick lay for profile rails type C30.



#### Profile rails DIN35

DIN rail DIN35, universal carrier made of a sheet metal profile in electrical engineering for fastening electrical equipment in distribution boxes, control cabinets, junction boxes, etc. Different components (e.g. relays, impulse switches, timers, circuit breakers, terminal blocks) can be slid onto a carrier rail from the side or plugged in and locked from the front. This standardized method facilitates the assembly of control cabinets and switch boxes, thus reducing labor costs. The different types of rails are in the standard EN 60715.



#### Shielding terminals type C30 made of hardened aluminum alloy

- With pin and with spring
- Profile rails No. 4382, 4383 and 80291, type C30 serves as busbar
- Remove cable sheath, expose shield
- Handle like quick installer
- With steel spring that creates contact without damaging shield
- Do not use as a cable fastener!

