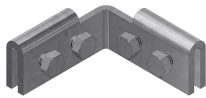




Product data sheet

53602 - Connecting clamp IG 90° with 6-kt-Schr.



for connecting with 90° inside miter of the channel shells

Characteristics	
Base Unit	Piece
availability	Delivery according to agreement
group	290300
Packaging unit	1
country of origin	CH
Weight (g)	57,58 g



## **Product data sheet**

53602 - Connecting clamp IG 90° with 6-kt-Schr.

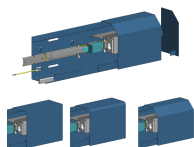
### **Product accessories**



## Product data sheet

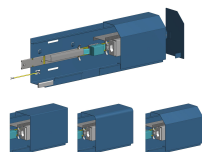
53602 - Connecting clamp IG 90° with 6-kt-Schr.

### Product systems



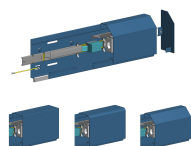
#### Combination trunking system KOK 200x120

Combination duct KOK 200x120 mm.



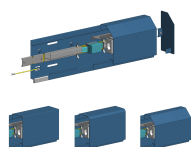
#### Combination trunking system KOK 200x120 as base trunking

Combination trunking KOK 200x120 mm as base trunking. With suspension cover.



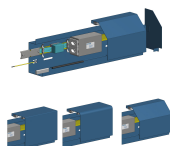
#### Combination trunking system KOK 180x90 as base trunking

Combination trunking KOK 180x90 mm as base trunking. With suspension cover.



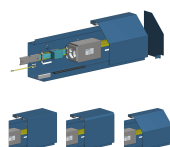
#### Combination trunking system KOK 180x90

Combination duct KOK 180x90 mm.



#### Hinged cover channel system KDK 200x130

Hinged cover channel 200x130 mm



#### Hinged cover channel system KDK 220x150

Hinged cover channel 200x150 mm

