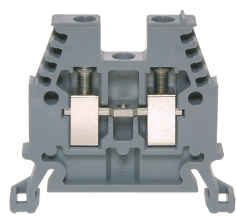




Product data sheet

3450GR - Terminal block DIN35 4mm² 45x6x36mm gray



Terminal block DIN35 4mm² 45x6x36mm gray. Stainless steel screws (A2), 4-digit marking option on both sides, countersunk for cross-connections

| Characteristics | |
|---|----------------------|
| Eldas number | 158100237 |
| Base Unit | Piece |
| availability | available from stock |
| EAN Code | 7611718200052 |
| group | 165000 |
| Packaging unit | 50 |
| country of origin | CH |
| Customs tariff number | 8536.9080 |
| Weight (g) | 8 g |
| Color | gray |
| Technical data | |
| Dimensions length x width x height (mm) | 45x6x36 mm |
| Dimensions length x width x height (inch) | 1.77x0.24x1.41 inch |
| Cross section (mm²) | 0,5 - 4 mm² |
| Nominal current (A) | 32 A |



Product data sheet

3450GR - Terminal block DIN35 4mm² 45x6x36mm gray






| | |
|--|-------------------------------------|
| Rated voltage (V) | 1000 V |
| Connection type | Screw terminal |
| DIN rail type | DIN-35 |
| Smallest connectable section (mm ²) | 0,5 mm ² |
| Number of connection point | 2 |
| Number of floor | 1 |
| Number of potentials | 1 |
| Clamping screw M | M3 (M = 0.7Nm) |
| Central thread M | M3 (M = 0.7Nm) |
| Insulating material | PA66 |
| Nominal Cross-section (mm ²) | 4 mm ² |
| Stripping length mm (mm) | 9 mm |
| conductors of the same cross-section per clamping point EN60947 (mm ²) | 1x4 , 2x2,5 , 2x1,5 mm ² |
| Head reception room width x height (mm) | 3.2x4.6 mm |
| Rating data according to UL 1059 | |
| Rated voltage US (V) | 600 V |
| Nominal cross section (AWG) | 12 AWG |
| Cross-section (AWG) | 12 - 20 AWG |
| Smallest connectable section (AWG) | 22 AWG |
| Stripping length (inch) | 0,35 inch |
| Tightening torque (lb-inch) | 6,2 lb-inch |



Product data sheet

3450GR - Terminal block DIN35 4mm² 45x6x36mm gray

Product accessories

| | |
|--|--|
|  | 3886/4 - Cover for 4 terminals yellow with black printing, to series 3424,3450 |
|  | 3886/5 - Cover for 5 terminals yellow with black printing, to series 3424,3450 |
|  | 3886/6 - Cover for 6 terminals yellow with black printing, to series 3424,3450 |
|  | 3886/7 - Cover for 7 terminals yellow with black printing, to series 3424,3450 |
|  | 3886/8 - Cover for 8 terminals yellow with black printing, to series 3424,3450 |



Product data sheet

3450GR - Terminal block DIN35 4mm² 45x6x36mm gray

Product systems



Terminal blocks DIN35 2.5mm²-70mm²

DIN35 terminal blocks 2.5mm²-70mm² with best possible contacting, stainless steel screws, 4-digit marking option on both sides, recessed for cross-connections

