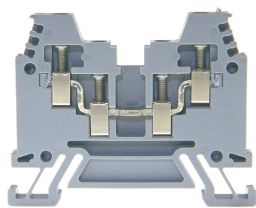




Product data sheet

30973GR - X terminal block DIN35 2.5mm² gray



X-series clamp with 4 connections with stainless steel screws, 3-digit marking option on both sides, recessed for cross connections

Characteristics	
Eldas number	158149137
Base Unit	Piece
availability	Delivery in 4 weeks
EAN Code	7611718221590
group	165000
Packaging unit	50
country of origin	CH
Customs tariff number	8536.9080
Weight (g)	11 g
Color	gray
Technical data	
Dimensions length x width x height (mm)	58.5x5x41.6 mm
Dimensions length x width x height (inch)	2.30x0.20x1.64 inch
Cross section (mm²)	0,5 - 2,5 mm²
Nominal current (A)	24 A



Product data sheet

30973GR - X terminal block DIN35 2.5mm² gray

Rated voltage (V)	800 V
Connection type	Screw terminal
DIN rail type	DIN-35
Number of connection point	4
Number of floor	1
Number of potentials	1
Clamping screw M	M2.5
Insulating material	PA66
Nominal Cross-section (mm ²)	2,5 mm ²
Stripping length mm (mm)	9 mm
Head reception room width x height (mm)	2.5x3.2 mm
Rating data according to UL 1059	
Rated voltage US (V)	600 V
Nominal cross section (AWG)	14 AWG
Cross-section (AWG)	14 - 20 AWG
Stripping length (inch)	0,35 inch



Product data sheet

30973GR - X terminal block DIN35 2.5mm² gray

Product accessories



81505/2 - Cross-connection 2-pole to DIN35/32 2.5mm² terminal blocks

Insulated cross-connection 2-pole to DIN32/35 terminal blocks including M2.5 screws.
Dimension: 9.1x18.8mm.



81505/3 - Cross-connection 3-pole to terminal blocks DIN32/35 2.5mm²

Insulated cross-connection 3-pole to DIN32/35 terminal blocks including M2 screws.
Dimension: 5.14.2x18.8mm.



81505/4 - Cross-connection 4-pole to terminal blocks DIN32/35 2.5mm²

Insulated cross-connection 4-pole to terminal blocks DIN32/35 2.5mm² including screws M2.5. dimension: 19.3x18.8mm.



81505/5 - Cross-connection 5-pole to DIN32/35 2.5mm² terminal blocks

Insulated cross-connections 5-pole to DIN32/35 terminal blocks including M2.5 screws.
Dimension: 24.4x18.8mm.



81505/10 - Cross-connection 10-pole to DIN32/35 2.5mm² terminal blocks

Insulated cross-connection 10-pole to terminal blocks DIN32/35 2.5mm² including screws M2.5. dimension: 49.7x18.8mm.



81505 - Cross connection bolt single M2.5 insulated (10.6mm)

Cross connection bolt complete with spacer sleeve. 10.6 mm



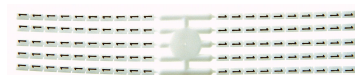
30408 - Link to cross-connections

to terminals 2.5mm 2



Bezeichnungskarte_5x5mm - Designation card 5x5mm

Various designation plates with different embossing.



Bezeichnungskarte_5x3mm - Designation card 5x3mm

Various designation plates with different embossing.



Bezeichnungskarte_5x9mm - Designation card 5x9mm

Various designation plates with different embossing.



Bezeichnungskarte_5x12mm - Designation card 5x12mm

Various designation plates



Product data sheet

30973GR - X terminal block DIN35 2.5mm² gray



80247 - Test plug Ø 2.3mm red, socket 4mm

connecting cable incl.



80248 - Test plug Ø 2.3mm black, socket 4mm

connecting cable incl.



30983 - End barrier DIN35 grey to 30973

End wall suitable for 30973



3418 - Stopper DIN35 height 30mm

Makrolon locking piece



30790 - Cross-junction rack 10pole grey 5mm

Cross-connection rake made of nickel-plated brass, for terminal blocks 2.5mm² with 5mm pitch



81401/4 - Cover for 4 terminals yellow

with black marking, to series 30150, 30903, 30973, 30860



81401/5 - Cover for 5 terminals yellow

with black marking, to series 30150, 30903, 30973, 30860



81401/6 - Cover for 6 terminals yellow

with black marking, to series 30150, 30903, 30973, 30860



81401/7 - Cover for 7 terminals yellow

with black marking, to series 30150, 30903, 30973, 30860



81401/8 - Cover for 8 terminals yellow

with black marking, to series 30150, 30903, 30973, 30860



81440 - Sealing eyelet Ø 3.2mm

Sealing eyes



30421 - Cover strip for double level and terminal blocks 9.5mm, length 280mm

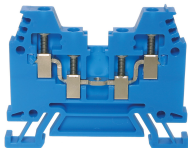
Cover strip for double level and terminal blocks DIN32/35 9.5mm , length 280mm



Product data sheet

30973GR - X terminal block DIN35 2.5mm² gray

Product systems



X terminal blocks DIN 35

Various terminal blocks with 4 connections.

