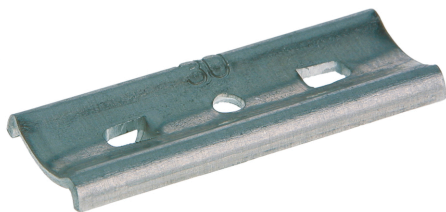




Product data sheet

43639 - Baseplate C20 12-16mm



of hardened aluminium alloy

Characteristics	
Eldas number	120190807
Base Unit	Piece
availability	available from stock
EAN Code	7611718212543
group	171000
Packaging unit	100
country of origin	CH
Customs tariff number	761699
Weight (g)	2 g



Product data sheet

43639 - Baseplate C20 12-16mm

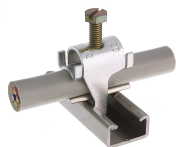
Product accessories



Product data sheet

43639 - Baseplate C20 12-16mm

Product systems



Quick installer aluminum alloy profile rail type C20



- Quick laying aluminum alloy for profile rail type C20.
 - With hexagon slotted screw.
 - For the laying of cables are always cable pads required
-