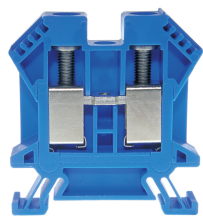




Product data sheet

3427BL - Terminal block DIN35 16mm² 55x11x55mm blue



Terminal block DIN35 16mm² 55x11x55mm blue with best possible contacting, stainless steel screws, 4-digit marking option on both sides, recessed for cross-connections

Characteristics	
Eldas number	158120557
Base Unit	Piece
availability	Delivery in 4 weeks
EAN Code	7611718202537
group	165000
Packaging unit	20
country of origin	CH
Customs tariff number	8536.9080
Weight (g)	46 g
Color	blue
Technical data	
Dimensions length x width x height (mm)	55x11x55 mm
Dimensions length x width x height (inch)	2.17x0.43x2.17 inch
Cross section (mm²)	1,5 - 16 mm²
Nominal current (A)	76 A



## Product data sheet

### 3427BL - Terminal block DIN35 16mm<sup>2</sup> 55x11x55mm blue

Rated voltage (V)	1000 V
Connection type	Screw terminal
DIN rail type	DIN-35
Smallest connectable section (mm <sup>2</sup> )	1,5 mm <sup>2</sup>
Number of connection point	2
Number of floor	1
Number of potentials	1
Clamping screw M	M5 (M = 2.5Nm)
Central thread M	M4 (M = 1.5Nm)
Insulating material	PA66
Nominal Cross-section (mm <sup>2</sup> )	16 mm <sup>2</sup>
Stripping length mm (mm)	13 mm
conductors of the same cross-section per clamping point EN60947 (mm <sup>2</sup> )	1x16 , 2x10 , 2x6 mm <sup>2</sup>
Head reception room width x height (mm)	7.3x8.6 mm
<b>Rating data according to UL 1059</b>	
Rated voltage US (V)	600 V
Nominal cross section (AWG)	6 AWG
Cross-section (AWG)	4 - 14 AWG
Smallest connectable section (AWG)	16 AWG
Stripping length (inch)	0,51 inch
Tightening torque (lb-inch)	22,13 lb-inch



## Product data sheet

3427BL - Terminal block DIN35 16mm<sup>2</sup> 55x11x55mm blue

### Product accessories



#### 81501/2 - Cross-connection 2-pole to DIN35 16mm<sup>2</sup> terminal blocks

Insulated cross-connection 2-pole to terminal blocks DIN35 16mm<sup>2</sup> including screws M4.  
Dimension: 20x29.8 mm



#### 81501/3 - Cross-connection 3-pole to DIN35 16mm<sup>2</sup> terminal blocks

Insulated cross-connection 3-pole to terminal blocks DIN35 16mm<sup>2</sup> including screws M4.  
Dimension: 31x29.8 mm



#### 81501/4 - Cross-connection 4-pole to DIN35 16mm<sup>2</sup> terminal blocks

Insulated cross-connection 4-pole to terminal blocks DIN35 16mm<sup>2</sup> including screws M4.  
Dimension: 42x29.8 mm



#### 81501/5 - Cross-connection 5-pole to DIN35 16mm<sup>2</sup> terminal blocks

Insulated cross-connection 5-pole to terminal blocks DIN35 16mm<sup>2</sup> including screws M4.  
Dimension: 53x29.8 mm



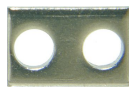
#### 81501/10 - Cross-connection 10-pole to DIN35 16mm<sup>2</sup> terminal blocks

Insulated cross-connection 10-pole to terminal blocks DIN35 16mm<sup>2</sup> including screws M4.  
Dimension: 108x29.8 mm



#### 81501 - Separate connecting pin M4 insulated

Cross connection bolt complete with spacer sleeve



#### 81414L - Link to cross-connections

to terminals 16mm 2



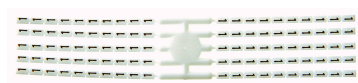
#### Bezeichnungskarte\_6x12mm - Designation cards 6x12mm

Various designation labels 6x12mm with different embossing.



#### Bezeichnungskarte\_6x9mm - Designation card 6x9mm

Various designation plates with different embossing.



#### Bezeichnungskarte\_6x3mm - Designation card 6x3mm

Various designation plates with different embossing.



#### 80071R - Test plug Ø M4 red, socket 4mm

plug and adaptor in one piece



## Product data sheet

3427BL - Terminal block DIN35 16mm<sup>2</sup> 55x11x55mm blue



### 3518 - End barrier DIN35 grey to 3427

End wall suitable for 3427



### 3508 - Partition DIN35 grey to 3427

Partition wall suitable for 3427



### 3418 - Stopper DIN35 height 30mm

Makrolon locking piece



### 30370 - Stopper DIN35 height 23mm

Locking piece made of nickel-plated brass M3 screw



### 30199 - Stopper DIN35 height 50mm

Aluminum alloy locking piece



### 3868/4 - Cover for 4 terminals yellow

with black printing, to series 3427,345216



### 3868/5 - Cover for 5 terminals yellow

with black printing, to series 3427,345216



### 3868/6 - Cover for 6 terminals yellow

with black printing, to series 3427,345216



### 3868/7 - Cover for 7 terminals yellow

with black printing, to series 3427,345216



### 3868/8 - Cover for 8 terminals yellow

with black printing, to series 3427,345216



### 81441 - Sealing eyelet Ø 4.2mm

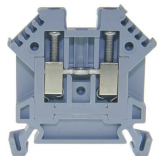
Sealing eyes



## Product data sheet

3427BL - Terminal block DIN35 16mm<sup>2</sup> 55x11x55mm blue

### Product systems



#### Terminal blocks for high demands DIN35

Terminal blocks for high demands DIN35 with best possible contacting, stainless steel screws, 4-digit marking possibility on both sides, recessed for cross connections

