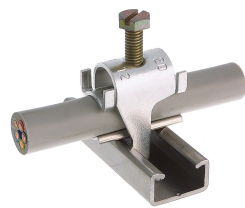




System overview

Quick installer aluminum alloy profile rail type C20



- Quick laying aluminum alloy for profile rail type C20.
- With hexagon slotted screw.
- For the laying of cables are always cable pads required

Components

	43663 - Baseplate C20 8-12mm of hardened aluminium alloy	
	43627 - Cable fixing bracket C20 16-20mm made of aluminum alloy, hardened without cable support	
	43695 - Cable fixing bracket C20 8-12mm made of aluminum alloy, hardened without cable support	
	43636 - Quick shifter C20 32-40mm made of aluminum alloy, hardened without cable support	
	43639 - Baseplate C20 12-16mm of hardened aluminium alloy	
	43665 - Baseplate C20 16-20mm of hardened aluminium alloy	
	43692 - Cable fixing bracket C20 20-25mm made of aluminum alloy, hardened without cable support	
	43675 - Cable fixing bracket C20 25-32mm made of aluminum alloy, hardened without cable support	



System overview

Quick installer aluminum alloy profile rail type C20

	43671 - Quick jig C20 40-48mm made of aluminum alloy, hardened without cable support	
	43640 - Quick jig C20 48-56mm made of aluminum alloy, hardened without cable support	
	43641 - Cable fixing bracket C20 12-16mm made of aluminum alloy, hardened without cable support	
	43655 - Cable support C20 32-40 made of aluminum alloy, hardened	
	43659 - Cable support C20 40-48mm made of aluminum alloy, hardened	
	43688 - Cable support C20 48-56mm made of aluminum alloy, hardened	
	43652 - Baseplate C20 20-25mm of hardened aluminium alloy	
	43680 - Baseplate C20 25-32mm of hardened aluminium alloy	
	4384RZ/3M - Profile rail C20 hot galvanized steel 3 m Profile rail C20 with 22x12x1.5 mm made of hot-dip galvanized steel, with a length of 3 m.	
	4384R/3M - Profile rail C20 bare steel 3 m Profile rail C20 with 22x12x1.5 mm made of bright steel, with a length of 3 m.	