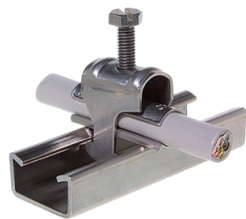




Product data sheet

43240 - Quick jig C30 70-80mm Niro



A4 stainless steel quick installers are immer cable pads are required for cable installation

Characteristics	
Eldas number	120127327
Base Unit	Piece
availability	available from stock
Packaging unit	25
Customs tariff number	8302.4990
Technical data	
Dimensions length x width x height (mm)	88x60 mm
Material	Stainless steel
Clampable diameter (mm)	70-80 mm



## Product data sheet

43240 - Quick jig C30 70-80mm Niro

### Product accessories



**43240U - Cable support C30 70-80mm**

a4 stainless steel



## Product data sheet

43240 - Quick jig C30 70-80mm Niro

### Product systems

---



#### Quick stainless steel feeder type C30

Various stainless steel quick lay.

