



## Product data sheet

48353/01 - Box FC E90 5G2.5 junction M20 D:6-8



### Characteristics

Base Unit	Piece
availability	Delivery according to agreement
EAN Code	7611718269882
group	170000
Packaging unit	1
country of origin	CH
Customs tariff number	8536.9080
Weight (g)	779 g
Color	orange

### Technical data

Fire load (KWh)	1,91 kWh
Dimensions length x width x height (mm)	185x65x70 mm
Dimensions length x width x height (inch)	7.28x2.56x2.76 inch
Degree of protection	IP66/IP68 (2m,30min)
Metal parts	Metal parts:V4A / Contacting : Cu alloy



## Product data sheet

48353/01 - Box FC E90 5G2.5 junction M20 D:6-8

Flat cable contacting type	Piercing contact (screw)
Number of poles	5 pole
Contacting type	Screw terminal
Connection conductor (mm <sup>2</sup> )	5x2,5 mm <sup>2</sup>
Thread cable gland	mit Kabelverschraubung M20x1.5 (IP68) D= 6.0 mm - 8.0 mm
Cable gland (mm)	6.0-8.0 mm
Rated current heavy current part (A)	24(2.5mm <sup>2</sup> ) A
Rated voltage heavy current part (V)	690 V
Operating Temperature (°C)	-15 to 85 °C
Installation temperature min. (°C)	5 °C
Function maintenance	E30/E90 (DIN 4102-12)
Plastic parts	Halogen-free
Material slider/bottom part	Polyamide, orange
Material housing	Polyamide, orange
Material hood	Polyamide, orange

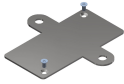


## Product data sheet

48353/01 - Box FC E90 5G2.5 junction M20 D:6-8

### Product accessories

---



**48354 - Retaining plate for junction box (48353/48653/48753)**

Retaining plate for junction box 48353-55/48653-55/48753-55

---



## Product data sheet

48353/01 - Box FC E90 5G2.5 junction M20 D:6-8

### Product systems

---



#### **FE180 E30/E90 5G2.5 mm<sup>2</sup>**

Woertz Fire Safety System FE180 E30/E90 5G2.5 mm<sup>2</sup> for power supply of safety-relevant elements, such as emergency and escape route lighting, smoke extraction systems or fire department elevators.

