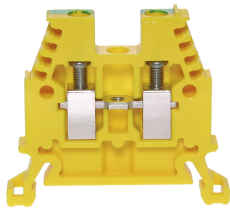




Product data sheet

3450GE - Terminal block DIN35 4mm² yellow



Characteristics	
Eldas number	158100247
Base Unit	Piece
availability	Delivery in 4 weeks
EAN Code	7611718200045
group	165000
Packaging unit	50
country of origin	CH
Customs tariff number	8536.9080
Weight (g)	8 g
Color	yellow
Technical data	
Dimensions length x width x height (mm)	45x6x36 mm
Dimensions length x width x height (inch)	1.77x0.24x1.41 inch
Cross section (mm²)	0,5 - 4 mm²
Nominal current (A)	32 A



## Product data sheet

### 3450GE - Terminal block DIN35 4mm<sup>2</sup> yellow

Rated voltage (V)	1000 V
Connection type	Screw terminal
DIN rail type	DIN-35
Smallest connectable section (mm <sup>2</sup> )	0,5 mm <sup>2</sup>
Number of connection point	2
Number of floor	1
Number of potentials	1
Clamping screw M	M3 (M = 0.7Nm)
Central thread M	M3 (M = 0.7Nm)
Insulating material	PA66
Nominal Cross-section (mm <sup>2</sup> )	4 mm <sup>2</sup>
Stripping length mm (mm)	9 mm
conductors of the same cross-section per clamping point EN60947 (mm <sup>2</sup> )	1x4 , 2x2,5 , 2x1,5 mm <sup>2</sup>
Head reception room width x height (mm)	3.2x4.6 mm
<b>Rating data according to UL 1059</b>	
Rated voltage US (V)	600 V
Nominal cross section (AWG)	12 AWG
Cross-section (AWG)	12 - 20 AWG
Smallest connectable section (AWG)	22 AWG
Stripping length (inch)	0,35 inch
Tightening torque (lb-inch)	6,2 lb-inch



## Product data sheet

3450GE - Terminal block DIN35 4mm<sup>2</sup> yellow

### Product accessories



**80070R - Test plug Ø M3 red, socket 4mm**

plug and adaptor in one piece



**80070S - Test plug Ø M3 black, socket 4mm**

plug and adaptor in one piece



**80220/6 - Test adaptor to terminal series 3450**

with hole for strands up to 0.75mm<sup>2</sup>



**3957 - Marking strip 6x3mm unprinted white**

Sales content with 100 tags per box



**3460 - End barrier DIN35 grey to 3450, 30150**

End wall suitable for 3450, 30150



**3461 - Partition DIN35 grey to 30150, 3450**

Partition wall suitable for 30150, 3450, 30800, 30800P



**80256 - Push-in barrier DIN35 to 30150, 3450**

white



**3418 - Stopper DIN35 height 30mm**

Makrolon locking piece



**30370 - Stopper DIN35 height 23mm**

Locking piece made of nickel-plated brass M3 screw



**81506/2 - Cross-connection 2-pole to terminals DIN32/35 4mm<sup>2</sup>**

Insulated cross-connection 2-pole to terminals DIN32/35 4mm<sup>2</sup> including screws M3.  
Standard version. Dimension: 11.1x20.8 mm



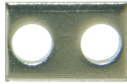
**81506 - Cross connection bolt single M3 insulated (10.6 mm)**

Cross-connection bolt complete with spacer sleeve. Standard version. Dimension: 10.6 mm



## Product data sheet

3450GE - Terminal block DIN35 4mm<sup>2</sup> yellow



### 81410L - Link to cross-connections

Connecting lug to terminals 4mm<sup>2</sup>. Dimension: 11.1x8 mm



### 30791 - Cross-junction rack 10pole grey 6mm

to terminals with 6mm pin spacing



### 80049/4 - Warning plate for single terminal 4mm<sup>2</sup>

to series 3450



### 3886/4 - Cover for 4 terminals yellow

with black printing, to series 3424,3450



### 81440 - Sealing eyelet Ø 3.2mm

Sealing eyes



### 3512 - Sealing screw M3x25 of polyamide

Sealing screw spring-loaded test probes, several numbers of poles can be lined up



### 30422 - Cover strip for terminal blocks 9.5mm, length 280mm

Cover strip for terminal blocks DIN32/35 9.5mm , length 280mm



### 81506/3 - Cross-connection 3-pole to terminals DIN32/35 4mm<sup>2</sup>

Insulated cross-connection 3-pole to terminals DIN32/35 4mm<sup>2</sup> including screws M3. Standard version. Dimension: 17.2x20.8 mm



### 81506/4 - Cross-connection 4-pole to terminals DIN32/35 4mm<sup>2</sup>

Insulated cross-connection 4-pole to terminals DIN32/35 4mm<sup>2</sup> including screws M3. Standard version. Dimension: 23.3x20.8 mm



### 81506/10 - Cross-connection 10-pole to terminals DIN32/35 4mm<sup>2</sup>

Insulated cross-connections 10-pole to terminals DIN32/35 4mm<sup>2</sup> including M3 screws. Standard version. Dimension: 59.9x20.8 mm



### Bezeichnungskarte\_6x12mm - Designation cards 6x12mm

Various designation labels 6x12mm with different embossing.



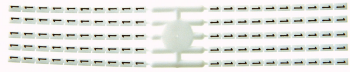
### Bezeichnungskarte\_6x9mm - Designation card 6x9mm

Various designation plates with different embossing.



Product data sheet

3450GE - Terminal block DIN35 4mm² yellow



**Bezeichnungskarte\_6x3mm - Designation card 6x3mm**

Various designation plates with different embossing.



**3886/5 - Cover for 5 terminals yellow**

with black printing, to series 3424,3450



**3886/6 - Cover for 6 terminals yellow**

with black printing, to series 3424,3450



**3886/7 - Cover for 7 terminals yellow**

with black printing, to series 3424,3450



**3886/8 - Cover for 8 terminals yellow**

with black printing, to series 3424,3450



## Product data sheet

3450GE - Terminal block DIN35 4mm<sup>2</sup> yellow

### Product systems

---



#### Terminal blocks DIN35 2.5mm<sup>2</sup>-70mm<sup>2</sup>

DIN35 terminal blocks 2.5mm<sup>2</sup>-70mm<sup>2</sup> with best possible contacting, stainless steel screws, 4-digit marking option on both sides, recessed for cross-connections

