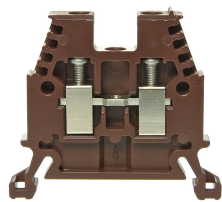




Product data sheet

3450BR - Terminal block DIN35 4mm² brown



Characteristics	
Eldas number	158100287
Base Unit	Piece
availability	Delivery according to agreement
EAN Code	7611718235498
group	165000
Packaging unit	50
country of origin	CH
Customs tariff number	8536.9080
Weight (g)	8 g
Color	brown
Technical data	
Dimensions length x width x height (mm)	45x6x36 mm
Dimensions length x width x height (inch)	1.77x0.24x1.41 inch
Cross section (mm²)	0,5 - 4 mm²
Nominal current (A)	32 A



Product data sheet

3450BR - Terminal block DIN35 4mm² brown

Rated voltage (V)	1000 V
Connection type	Screw terminal
DIN rail type	DIN-35
Smallest connectable section (mm ²)	0,5 mm ²
Number of connection point	2
Number of floor	1
Number of potentials	1
Clamping screw M	M3 (M = 0.7Nm)
Central thread M	M3 (M = 0.7Nm)
Insulating material	PA66
Nominal Cross-section (mm ²)	4 mm ²
Stripping length mm (mm)	9 mm
conductors of the same cross-section per clamping point EN60947 (mm ²)	1x4 , 2x2,5 , 2x1,5 mm ²
Head reception room width x height (mm)	3.2x4.6 mm
Rating data according to UL 1059	
Rated voltage US (V)	600 V
Nominal cross section (AWG)	12 AWG
Cross-section (AWG)	12 - 20 AWG
Smallest connectable section (AWG)	22 AWG
Stripping length (inch)	0,35 inch
Tightening torque (lb-inch)	6,2 lb-inch



Product data sheet

3450BR - Terminal block DIN35 4mm² brown

Product accessories



80070R - Test plug Ø M3 red, socket 4mm

plug and adaptor in one piece



80070S - Test plug Ø M3 black, socket 4mm

plug and adaptor in one piece



80220/6 - Test adaptor to terminal series 3450

with hole for strands up to 0.75mm²



3957 - Marking strip 6x3mm unprinted white

Sales content with 100 tags per box



3460 - End barrier DIN35 grey to 3450, 30150

End wall suitable for 3450, 30150



3461 - Partition DIN35 grey to 30150,3450

Partition wall suitable for 30150, 3450, 30800, 30800P



80256 - Push-in barrier DIN35 to 30150, 3450

white



3418 - Stopper DIN35 height 30mm

Makrolon locking piece



30370 - Stopper DIN35 height 23mm

Locking piece made of nickel-plated brass M3 screw



81506/2 - Cross-connection 2-pole to terminals DIN32/35 4mm²

Insulated cross-connection 2-pole to terminals DIN32/35 4mm² including screws M3.
Standard version. Dimension: 11.1x20.8 mm



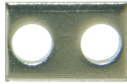
81506 - Cross connection bolt single M3 insulated (10.6 mm)

Cross-connection bolt complete with spacer sleeve. Standard version. Dimension: 10.6 mm



Product data sheet

3450BR - Terminal block DIN35 4mm² brown



81410L - Link to cross-connections

Connecting lug to terminals 4mm². Dimension: 11.1x8 mm



30791 - Cross-junction rack 10pole grey 6mm

to terminals with 6mm pin spacing



80049/4 - Warning plate for single terminal 4mm²

to series 3450



3886/4 - Cover for 4 terminals yellow

with black printing, to series 3424,3450



81440 - Sealing eyelet Ø 3.2mm

Sealing eyes



3512 - Sealing screw M3x25 of polyamide

Sealing screw spring-loaded test probes, several numbers of poles can be lined up



30422 - Cover strip for terminal blocks 9.5mm, length 280mm

Cover strip for terminal blocks DIN32/35 9.5mm , length 280mm



81506/3 - Cross-connection 3-pole to terminals DIN32/35 4mm²

Insulated cross-connection 3-pole to terminals DIN32/35 4mm² including screws M3. Standard version. Dimension: 17.2x20.8 mm



81506/4 - Cross-connection 4-pole to terminals DIN32/35 4mm²

Insulated cross-connection 4-pole to terminals DIN32/35 4mm² including screws M3. Standard version. Dimension: 23.3x20.8 mm



81506/10 - Cross-connection 10-pole to terminals DIN32/35 4mm²

Insulated cross-connections 10-pole to terminals DIN32/35 4mm² including M3 screws. Standard version. Dimension: 59.9x20.8 mm



Bezeichnungskarte_6x12mm - Designation cards 6x12mm

Various designation labels 6x12mm with different embossing.



Bezeichnungskarte_6x9mm - Designation card 6x9mm

Various designation plates with different embossing.



Product data sheet

3450BR - Terminal block DIN35 4mm² brown



Bezeichnungskarte_6x3mm - Designation card 6x3mm

Various designation plates with different embossing.



3886/5 - Cover for 5 terminals yellow

with black printing, to series 3424,3450



3886/6 - Cover for 6 terminals yellow

with black printing, to series 3424,3450



3886/7 - Cover for 7 terminals yellow

with black printing, to series 3424,3450



3886/8 - Cover for 8 terminals yellow

with black printing, to series 3424,3450



Product data sheet

3450BR - Terminal block DIN35 4mm² brown

Product systems



Terminal blocks DIN35 2.5mm²-70mm²

DIN35 terminal blocks 2.5mm²-70mm² with best possible contacting, stainless steel screws, 4-digit marking option on both sides, recessed for cross-connections

