



## Product data sheet

3426E - Terminal block DIN35 10mm<sup>2</sup> green yellow insulated



Terminal blocks with the best possible contact. Dimension 52x9x51mm. Stainless steel screws, 4-digit marking option on both sides, countersunk for cross-connections

### Characteristics

Eldas number	158120467
Base Unit	Piece
availability	Delivery according to agreement
EAN Code	7611718205521
group	165000
Packaging unit	25
country of origin	CH
Customs tariff number	8536.9080
Weight (g)	27 g
Color	green/yellow

### Technical data

Dimensions length x width x height (mm)	52x9x51 mm
Dimensions length x width x height (inch)	2.05x0.35x2.01 inch
Cross section (mm <sup>2</sup> )	1 - 10 mm <sup>2</sup>
Nominal current (A)	57 A



## Product data sheet

### 3426E - Terminal block DIN35 10mm<sup>2</sup> green yellow insulated

Rated voltage (V)	1000 V
Connection type	Screw terminal
DIN rail type	DIN-35
Smallest connectable section (mm <sup>2</sup> )	1 mm <sup>2</sup>
Number of connection point	2
Number of floor	1
Number of potentials	1
Clamping screw M	M4 (M = 1.5Nm)
Central thread M	M3 (M = 0.7Nm)
Insulating material	PA66
Nominal Cross-section (mm <sup>2</sup> )	10 mm <sup>2</sup>
Stripping length mm (mm)	13 mm
conductors of the same cross-section per clamping point EN60947 (mm <sup>2</sup> )	1x10 , 2x6 , 2x4 mm <sup>2</sup>
Head reception room width x height (mm)	5.8x7.5 mm
<b>Rating data according to UL 1059</b>	
Rated voltage US (V)	600 V
Nominal cross section (AWG)	8 AWG
Cross-section (AWG)	8 - 18 AWG
Smallest connectable section (AWG)	18 AWG
Stripping length (inch)	0,51 inch
Tightening torque (lb-inch)	13,27 lb-inch



## Product data sheet

3426E - Terminal block DIN35 10mm<sup>2</sup> green yellow insulated

### Product accessories



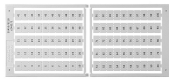
**80070R - Test plug Ø M3 red, socket 4mm**

plug and adaptor in one piece



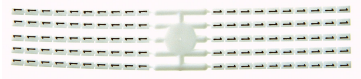
**2737R - Test plug Ø 2.8mm red, socket 4mm**

connecting cable incl.



**Bezeichnungskarte\_6x9mm - Designation card 6x9mm**

Various designation plates with different embossing.



**Bezeichnungskarte\_6x3mm - Designation card 6x3mm**

Various designation plates with different embossing.



**Bezeichnungskarte\_6x12mm - Designation cards 6x12mm**

Various designation labels 6x12mm with different embossing.



**3517 - End barrier DIN35 grey to 3426**

End wall suitable for 3426



**3507 - Partition DIN35 grey to 3426**

Partition wall suitable for 3426



**3418 - Stopper DIN35 height 30mm**

Makrolon locking piece



**30370 - Stopper DIN35 height 23mm**

Locking piece made of nickel-plated brass M3 screw



**30199 - Stopper DIN35 height 50mm**

Aluminum alloy locking piece



**81549/2 - Cross-connection 2-pole to DIN35 10mm<sup>2</sup> terminal blocks**

Insulated cross-connection 2-pole to terminal blocks DIN35 10mm<sup>2</sup> including screws M3.  
Dimension: 17.1x26.8 mm



## Product data sheet

### 3426E - Terminal block DIN35 10mm<sup>2</sup> green yellow insulated



#### 81549/3 - Cross-connection 3-pole to DIN35 10mm<sup>2</sup> terminal blocks

Insulated cross-connection 3-pole to terminal blocks DIN35 10mm<sup>2</sup> including screws M3.  
Dimension: 26.2x26.8 mm



#### 81549/4 - Cross-connection 4-pole to DIN35 10mm<sup>2</sup> terminal blocks

Insulated cross-connection 4-pole to DIN35 10mm<sup>2</sup> terminal blocks including M3 screws.  
Dimension: 35.3x26.8 mm



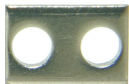
#### 81549/5 - Cross-connection 5pole to terminal 10mm<sup>2</sup>

Cross connections complete with M3 screws. 44.4x26.8 mm



#### 81549/10 - Cross-connection 10-pole to DIN35 10mm<sup>2</sup> terminal blocks

Insulated cross-connection 10-pole to DIN35 10mm<sup>2</sup> terminal blocks including M3 screws.  
Dimension: 89.9x26.8 mm



#### 81413L - Link to cross-connections

to terminals 10mm 2



#### 30422 - Cover strip for terminal blocks 9.5mm, length 280mm

Cover strip for terminal blocks DIN32/35 9.5mm , length 280mm



#### 81548/10 - Cross-connection 10-pole to terminals 6mm<sup>2</sup> for high demands

Insulated cross-connection 10-pole to DIN35 6mm<sup>2</sup> terminal blocks including M3 screws.  
Dimension: 79.9x20.8 mm



#### 3516 - End barrier DIN35 grey to 3424, 3425

End wall suitable for 3424, 3425



#### 3506 - Partition DIN35 grey to 30128, 3424

Partition wall suitable for 3424, 3425, 30123, 30124, 30127, 30128, 30130



#### 80255 - Push-in barrier DIN35 to 30128, 3424,

to 3425, 30138, 30137, white



#### 30792 - Cross-junction rack 10pole grey 8mm

to terminals with 6mm pin spacing



## Product data sheet

### 3426E - Terminal block DIN35 10mm<sup>2</sup> green yellow insulated



#### **81548 - Cross connection bolt single M3 insulated for high demands (11,5 mm)**

Cross-connection bolt complete with spacer sleeve to terminal blocks for high demands.  
Dimension: 11.5 mm



#### **81548/2 - Cross-connection 2-pole to terminal blocks 6mm<sup>2</sup> for high demands**

Insulated cross-connection for high demands 2-pole to terminal blocks 6mm<sup>2</sup> including screws M3. Dimension: 15.1x20.8 mm



#### **3869/4 - Cover for 4 terminals yellow**

with black printing, to series 3428



#### **3869/5 - Cover for 5 terminals yellow**

with black printing, to series 3428



#### **3869/6 - Cover for 6 terminals yellow**

with black printing, to series 3428



#### **3869/7 - Cover for 7 terminals yellow**

with black printing, to series 3428



#### **3869/8 - Cover for 8 terminals yellow**

with black printing, to series 3428



#### **81440 - Sealing eyelet Ø 3.2mm**

Sealing eyes



#### **3512 - Sealing screw M3x25 of polyamide**

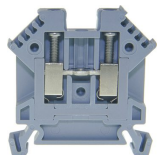
Sealing screw spring-loaded test probes, several numbers of poles can be lined up



## Product data sheet

3426E - Terminal block DIN35 10mm<sup>2</sup> green yellow insulated

### Product systems



#### Terminal blocks for high demands DIN35

Terminal blocks for high demands DIN35 with best possible contacting, stainless steel screws, 4-digit marking possibility on both sides, recessed for cross connections

