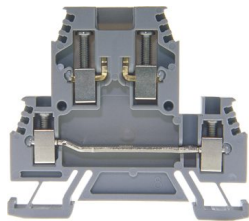




Product data sheet

30890 - Double level disconnect terminal block DIN35 2.5mm² gray



Double level disconnect terminal 2.5mm² L-L grey for disconnect plug

Characteristics	
Eldas number	158129137
Base Unit	Piece
availability	Delivery according to agreement
EAN Code	7611718220920
group	165000
Packaging unit	25
country of origin	CH
Customs tariff number	8536.9080
Weight (g)	19 g
Color	gray
Technical data	
Dimensions length x width x height (mm)	67x6x53 mm
Dimensions length x width x height (inch)	2.64x0.24x2.09 inch
Cross section (mm²)	0,5 - 2,5 mm²
Nominal current (A)	24 A



Product data sheet

30890 - Double level disconnect terminal block DIN35 2.5mm² gray

Rated voltage (V)	500 V
Connection type	Screw terminal
DIN rail type	DIN-35
Number of connection point	4
Number of floor	2
Number of potentials	2
Clamping screw M	M3
Insulating material	PA66
Nominal Cross-section (mm ²)	2,5 mm ²
Stripping length mm (mm)	8 mm
Head reception room width x height (mm)	3.8x3.1 mm
Rating data according to UL 1059	
Rated voltage US (V)	300 V
Nominal cross section (AWG)	14 AWG
Cross-section (AWG)	14 - 20 AWG
Stripping length (inch)	0,32 inch



Product data sheet

30890 - Double level disconnect terminal block DIN35 2.5mm² gray

Product accessories



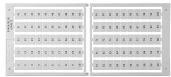
80070R - Test plug Ø M3 red, socket 4mm

plug and adaptor in one piece



2737R - Test plug Ø 2.8mm red, socket 4mm

connecting cable incl.



Bezeichnungskarte_6x9mm - Designation card 6x9mm

Various designation plates with different embossing.



Bezeichnungskarte_6x3mm - Designation card 6x3mm

Various designation plates with different embossing.



30892 - End barrier DIN35 grey to 30890, 30891

End wall suitable for 30890, 30891



3418 - Stopper DIN35 height 30mm

Makrolon locking piece



30370 - Stopper DIN35 height 23mm

Locking piece made of nickel-plated brass M3 screw



30199 - Stopper DIN35 height 50mm

Aluminum alloy locking piece



30791 - Cross-junction rack 10pole grey 6mm

to terminals with 6mm pin spacing



3821 - Disconnecting plug orange

to disconnecting terminals



30134 - Fuse plug 5x20mm

Fuse plug with fuse 5x20mm



30134/24 - Fuse plug 5x20mm, LED 24V

Fuse plug with fuse 5x20mm



Product data sheet

30890 - Double level disconnect terminal block DIN35 2.5mm² gray



30134/230 - Fuse plug 5x20mm, LED 230V

Fuse plug with fuse 5x20mm



30133 - Diode plug with rectifier diode black

Diode plug 1N 4007 with rectifier diode black



30205 - Diode plug with rectifier diode gray

Diode plug 1N 4007 with rectifier diode gray



30132 - Component plug, grey, empty

Component plug



81526/2 - Cross-connection 2pole to terminal 2.5mm²/4mm²

Cross connections complete with M3 screws. 11.1x17.8 mm



81526/3 - Cross-connection 3-pole to terminals DIN15/32/35 2.5mm²/4mm²

Insulated cross-connection 3-pole to terminals DIN15/32/35 2.5mm²/4mm² including screws M3. Dimension: 17.2x17.8 mm



81526/4 - Cross-connection 4-pole to terminals DIN15/32/35 2.5mm²/4mm²

Insulated cross-connection 4-pole to terminals DIN15/32/35 2.5mm²/4mm² including screws M3. Dimension: 23.3x17.8 mm



81526/5 - Cross-connection 5-pole to terminals DIN15/32/35 2.5mm²/4mm²

Insulated cross-connection 5-pole to terminals DIN15/32/35 2.5mm²/4mm² including screws M3. Dimension: 29.4x17.8 mm



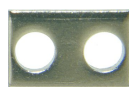
81526/10 - Cross-connection 10-pole to terminals DIN15/32/35 2.5mm²/4mm²

Insulated cross-connection 10-pole to terminals DIN15/32/35 2.5mm²/4mm² including screws M3. Dimension: 59.9x17.8 mm



81526 - Cross connection bolt single M3, insulated (9.1 mm)

Cross connection bolt complete with spacer sleeve. 9.1 mm



30441 - Link to cross-connections

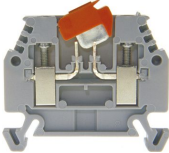

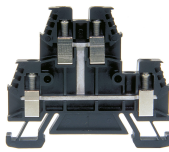
to terminals 4mm²



Product data sheet

30890 - Double level disconnect terminal block DIN35 2.5mm² gray

Product systems

	<p>Disconnect terminals DIN35 2.5mm²-6mm²</p> <p>Various disconnect terminals.</p>	
	<p>Double deck clamps DIN 35</p> <p>Various double-deck clamps.</p>	