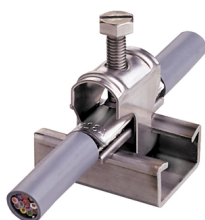




## System overview

Shielding terminals type C30 stainless steel A4 with screw



- With screw and with stainless steel spring
- The profile rails serve as a busbar
- Is suitable for installations where strong vibrations and large temperature differences may occur
- With spring to prevent independent loosening of the screw, adjust the vulnerability of the screen.
- Remove cable jacket, expose shield
- Handle like quick installer
- Do not use as a cable fastener!

## Components



### 43230/F - Shielding terminal C30 8-12mm

made of A4 stainless steel, with stainless steel screw and spring for profile rails no. 4382IN and 4383IN



### 43231/F - Shielding terminal C30 12-16mm

made of stainless steel A4, with screw and spring made of stainless steel for profile rails no. 4382IN and 4383IN



### 43232/F - Shielding terminal C30 16-20mm NIRO

made of A4 stainless steel, with stainless steel screw and spring for profile rails no. 4382IN and 4383IN



### 43233/F - Shielding terminal C30 20-25mm

made of A4 stainless steel, with stainless steel screw and spring for profile rails no. 4382IN and 4383IN



### 43234/F - Shielding terminal C30 25-32mm

made of A4 stainless steel, with stainless steel screw and spring for profile rails no. 4382IN and 4383IN



### 43235/F - Shielding terminal C30 32-40mm










made of A4 stainless steel, with stainless steel screw and spring for profile rails no. 4382IN and 4383IN





System overview

Shielding terminals type C30 stainless steel A4 with screw

	<p><b>43236/F - Shielding terminal C30 40-48mm</b></p> <p>made of A4 stainless steel, with stainless steel screw and spring for profile rails no. 4382IN and 4383IN</p>	
	<p><b>4382IN/3M - Profile rail C30 stainless steel V2A 3 m</b></p> <p>Profile rail C30 with 29x15x2 mm made of stainless steel V2A, with a length of 3 m.</p>	
	<p><b>4383IN/3M - Profile rail C30 stainless steel V2A 3 m</b></p> <p>Profile rail C30 with 32x18x3 mm made of stainless steel V2A, with a length of 3 m.</p>	
	<p><b>80170/16 - Bare earthing terminal 16mm2</b></p> <p>with anchoring stud for mounting rail C30</p>	
	<p><b>80170/50 - Bare earthing terminal 50mm2</b></p> <p>with anchoring stud for mounting rail C30</p>	