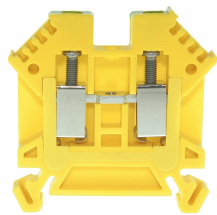




Product data sheet

3424E - Terminal block DIN35 4mm² 49x6x45mm green-yellow insulated



Terminal block DIN35 4mm² 49x6x45mm green-yellow insulated with best possible contacting, stainless steel screws, 4-digit marking possibility on both sides, recessed for cross-connections

Characteristics	
Eldas number	158120267
Base Unit	Piece
availability	Delivery in 4 weeks
EAN Code	7611718201523
group	165000
Packaging unit	50
country of origin	CH
Customs tariff number	8536.9080
Weight (g)	13 g
Color	green/yellow
Technical data	
Dimensions length x width x height (mm)	49x6x45 mm
Dimensions length x width x height (inch)	1.93x0.24x1.77 inch
Cross section (mm²)	0,5 - 4 mm²
Nominal current (A)	32 A



## Product data sheet

### 3424E - Terminal block DIN35 4mm<sup>2</sup> 49x6x45mm green-yellow insulated

Rated voltage (V)	1000 V
Connection type	Screw terminal
DIN rail type	DIN-35
Smallest connectable section (mm <sup>2</sup> )	0,5 mm <sup>2</sup>
Number of connection point	2
Number of floor	1
Number of potentials	1
Clamping screw M	M3 (M = 0.7Nm)
Central thread M	M3 (M = 0.7Nm)
Insulating material	PA66
Nominal Cross-section (mm <sup>2</sup> )	4 mm <sup>2</sup>
Stripping length mm (mm)	10 mm
conductors of the same cross-section per clamping point EN60947 (mm <sup>2</sup> )	1x4 , 2x2,5 , 2x1,5 mm <sup>2</sup>
Head reception room width x height (mm)	3.4x6 mm
<b>Rating data according to UL 1059</b>	
Rated voltage US (V)	600 V
Nominal cross section (AWG)	12 AWG
Cross-section (AWG)	12 - 20 AWG
Smallest connectable section (AWG)	22 AWG
Stripping length (inch)	0,39 inch
Tightening torque (lb-inch)	6,2 lb-inch



## Product data sheet

3424E - Terminal block DIN35 4mm<sup>2</sup> 49x6x45mm green-yellow insulated

### Product accessories



#### 81556/2 - Cross-connection 2-pole to terminal blocks 4mm<sup>2</sup> for high demands

Insulated cross-connection for high demands 2-pole to terminal blocks 4mm<sup>2</sup> including screws M3. Dimension: 11.6x20.8 mm



#### 81556/3 - Cross-connection 3-pole to terminal blocks 4mm<sup>2</sup> for high demands

Insulated cross-connection for high demands 3-pole to terminal blocks 4mm<sup>2</sup> complete with M3 screws to terminal blocks for high demands. Dimension: 17.7x20.8 mm



#### 81556/4 - Cross-connection 4-pole to DIN35 4mm<sup>2</sup> terminal blocks for high demands

Insulated cross-connection for high demands 4-pole to terminal blocks DIN35 4mm<sup>2</sup> including screws M3. Dimension: 23.8x20.8 mm



#### 81556/5 - Cross-connection 5-pole to DIN35 4mm<sup>2</sup> terminal blocks for high demands

Insulated cross-connection for high demands 5-pole to terminal blocks DIN35 4mm<sup>2</sup> including screws M3. Dimension: 29.9x20.8 mm



#### 81556/10 - Cross-connection 10-pole to DIN35 4mm<sup>2</sup> terminal blocks for high demands

Insulated cross-connection for high demands 10-pole to DIN35 4mm<sup>2</sup> terminal blocks including M3 screws. Dimension: 60.4x20.8 mm



#### 81556 - Cross connection bolt single M3 insulated (11.5 mm)

Cross connection bolt complete with spacer sleeve. Design for high demands. 11.5 mm



#### Bezeichnungskarte\_6x12mm - Designation cards 6x12mm

Various designation labels 6x12mm with different embossing.



#### Bezeichnungskarte\_6x9mm - Designation card 6x9mm

Various designation plates with different embossing.



#### Bezeichnungskarte\_6x3mm - Designation card 6x3mm

Various designation plates with different embossing.



#### 30791 - Cross-junction rack 10pole grey 6mm

to terminals with 6mm pin spacing



#### 80070R - Test plug Ø M3 red, socket 4mm

plug and adaptor in one piece



## Product data sheet

3424E - Terminal block DIN35 4mm<sup>2</sup> 49x6x45mm green-yellow insulated



**2737R - Test plug Ø 2.8mm red, socket 4mm**  
connecting cable incl.



**3516 - End barrier DIN35 grey to 3424, 3425**  
End wall suitable for 3424, 3425



**3506 - Partition DIN35 grey to 30128, 3424**  
Partition wall suitable for 3424, 3425, 30123, 30124, 30127, 30128, 30130



**80255 - Push-in barrier DIN35 to 30128, 3424,**  
to 3425, 30138, 30137, white



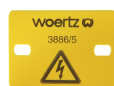
**30422 - Cover strip for terminal blocks 9.5mm, length 280mm**  
Cover strip for terminal blocks DIN32/35 9.5mm , length 280mm



**30370 - Stopper DIN35 height 23mm**  
Locking piece made of nickel-plated brass M3 screw



**30199 - Stopper DIN35 height 50mm**  
Aluminum alloy locking piece



**3886/4 - Cover for 4 terminals yellow**  
with black printing, to series 3424,3450



**3886/5 - Cover for 5 terminals yellow**  
with black printing, to series 3424,3450



**3886/6 - Cover for 6 terminals yellow**  
with black printing, to series 3424,3450



**3886/7 - Cover for 7 terminals yellow**  
with black printing, to series 3424,3450



**3886/8 - Cover for 8 terminals yellow**  
with black printing, to series 3424,3450



Product data sheet

3424E - Terminal block DIN35 4mm<sup>2</sup> 49x6x45mm green-yellow insulated



**81440 - Sealing eyelet Ø 3.2mm**

Sealing eyes



**3512 - Sealing screw M3x25 of polyamide**

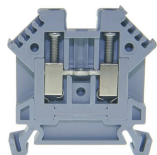
Sealing screw spring-loaded test probes, several numbers of poles can be lined up



## Product data sheet

3424E - Terminal block DIN35 4mm<sup>2</sup> 49x6x45mm green-yellow insulated

### Product systems



#### Terminal blocks for high demands DIN35

Terminal blocks for high demands DIN35 with best possible contacting, stainless steel screws, 4-digit marking possibility on both sides, recessed for cross connections

