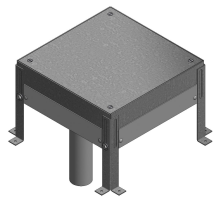




Product data sheet

51763 - Housing BAK/PULL 200-270 St



Housing made of sendzimir-galvanized sheet steel 2mm
with adjustable feet and floor insertion tube M50
with temporary steel cover including screws
Adjustment range: 200-270mm

Characteristics	
Base Unit	Piece
availability	Delivery according to agreement
EAN Code	7611718229176
group	282000
Packaging unit	50
country of origin	CH
Customs tariff number	7308.9000
Weight (g)	6075 g



Product data sheet

51763 - Housing BAK/PULL 200-270 St

Product accessories



Product data sheet

51763 - Housing BAK/PULL 200-270 St

Product systems



Floor junction box BAK4 to slab formwork



Plenum box BAK4 for fastening to the slab formwork.

The installation of underfloor ducts requires a minimum height of the concrete cover (60mm). If this height is not available, special boxes can be obtained for concreting into the raw slab. After fastening to the formwork, they are connected to each other with underfloor trunking 200 x 40, covered with the temporary protective cover and poured into the concrete up to the top edge.

The installation kit is mounted on the levelable box insert; the opening between the box bottom and the installation plate allows the cable to pass through to the next box. After finished wiring, an aluminum cover with cable trough is attached.

Connection box consisting of:

- Enclosure with adjustable feet, with four side openings 202 x 42 mm and a bottom entry tube M50 with temporary one-way steel cover incl. 4 screws
- Enclosure insert made of aluminum, with frame 304 x 304
- Aluminum lid with edge height 4 mm
- 2 cable trays made of polycarbonate crystal clear with transparent filler piece



Product data sheet

51763 - Housing BAK/PULL 200-270 St



Floor junction box BAK22 to slab formwork



Plenum box BAK22 for fastening to the slab formwork.

The installation of underfloor ducts requires a minimum height of the concrete overlay (60 mm). If this height is not available, special boxes can be obtained for concreting into the raw slab. After fastening to the formwork, they are connected to each other with underfloor trunking 200 x 40, covered with the temporary protective cover and cast in the concrete up to the top edge.

The installation kit is mounted on the levelable box insert; the opening between the box bottom and the installation plate allows the cable to pass through to the next box. After finished wiring, an aluminum cover with cable trough is attached.

Connection box consisting of:

- Enclosure with adjustable feet, with four side openings 202 x 42 mm and a bottom entry tube M50 with temporary one-way steel cover incl. 4 screws
- Enclosure insert made of aluminum, with frame 278 x 278
- Al cover with edge 22 mm
- 2 cable trays made of polycarbonate crystal clear with transparent filler piece